

**Wall-Mounted Tub Trim**  
**3-2925**



**Features**

- Solid brass construction
- 3-spoke circular handles
- 5-9/16" (14.1 cm) spout length
- 1/2" NPT spout inlet fitting
- Intended for use with Newport Brass rough valve as specified (Required Accessory)
- Rough valve incorporates a brass valve body assembly
- Rough valve incorporates quarter-turn washerless ceramic disc valve cartridges

**Codes / Standards Compliance**

Meets or exceeds the following at date of manufacture:

- ASME A112.18.1/CSA B125.1
- IAPMO/cUPC
- IPC
- ICC/ANSI A117.1
- All applicable US Federal and State material regulations

**Colors / Finishes**

- 10B: Oil Rubbed Bronze
- 15: Polished Nickel
- 15S: Satin Nickel - PVD
- 26: Polished Chrome
- Other: Refer to the Newport Brass catalog for additional color/finish options.



**Specified Model**

Model	Description	Colors   Finishes
3-2925	Wall-Mounted Tub Trim	<input type="checkbox"/> 10B <input type="checkbox"/> 15 <input type="checkbox"/> 15S <input type="checkbox"/> 26 <input type="checkbox"/> Other

**Required Accessory:** Trim, above, and Rough Valve Kit, below, must both be specified

Application	Tub Only Valve
Description	2-Cartridge Assembly
Inlet/Outlet	1/2"
Part Number	1-500
Image	

**Product Specification:** Add "Color / Finish" suffix to Model number, below.

The Wall-Mounted Tub Trim shall be made of solid brass construction. Wall-Mounted Tub Trim shall include 3-spoke circular handles and a 5-9/16" (14.1 cm) tub spout that incorporates a 1/2" NPT inlet fitting. Wall-Mounted Tub Trim shall be Newport Brass Model 3-2925/\_\_\_\_ and Newport Brass rough valve shall be 1-500.

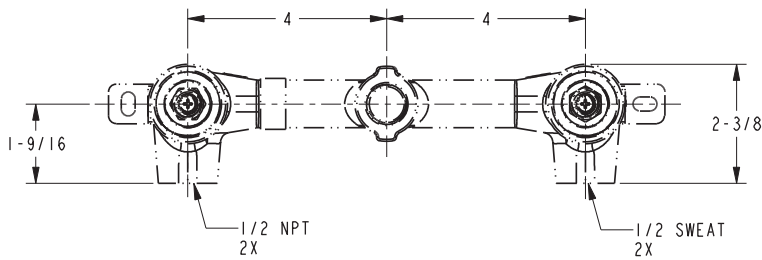
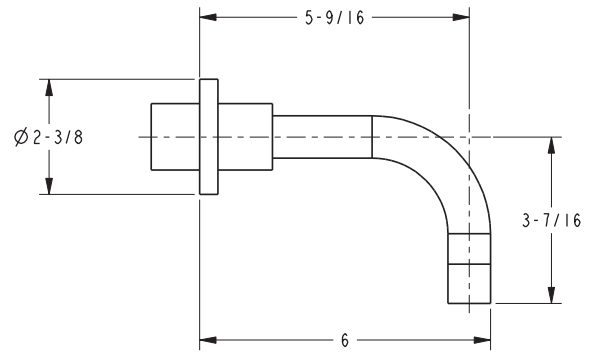
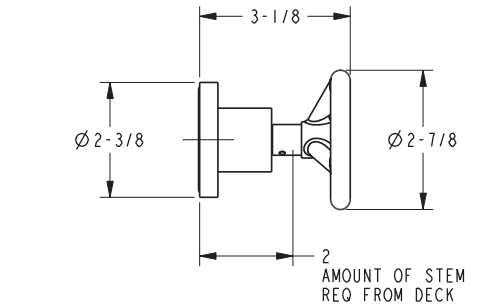
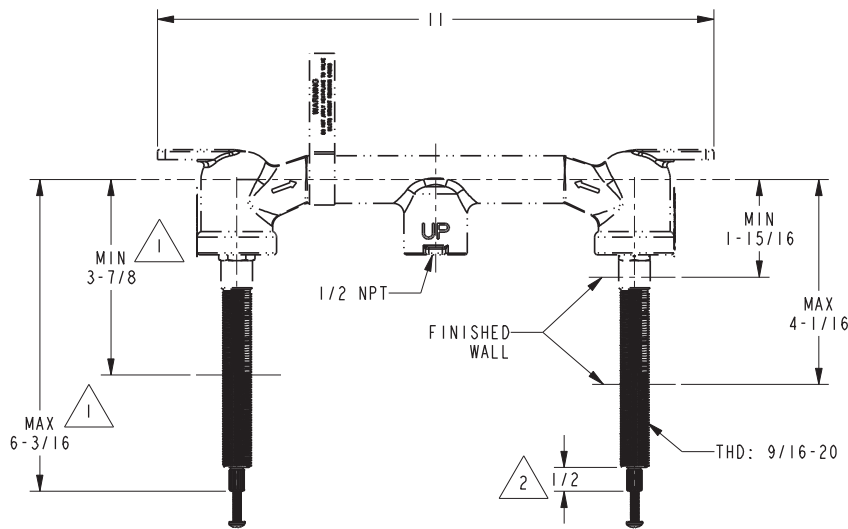
# 3-2925

## PRODUCT DIMENSIONS *(Units are in inches)*

NOTES:

1. CUT STEM AS SHOWN.

2. CUT ALL THREADS 1/2" SHORTER THAN STEM.



### Slater Wall-Mounted Tub Trim 3-2925