

Features

Solid brass construction
Bottle trap design that fits 1-1/4" drain tailpiece.
Includes 1-1/4" x 1-1/2" bushing adapter for connection to 1-1/2" sewer line
Bottle Trap 13" CL to wall length
Flange not included

CONTEMPORARY P TRAP, ROUND

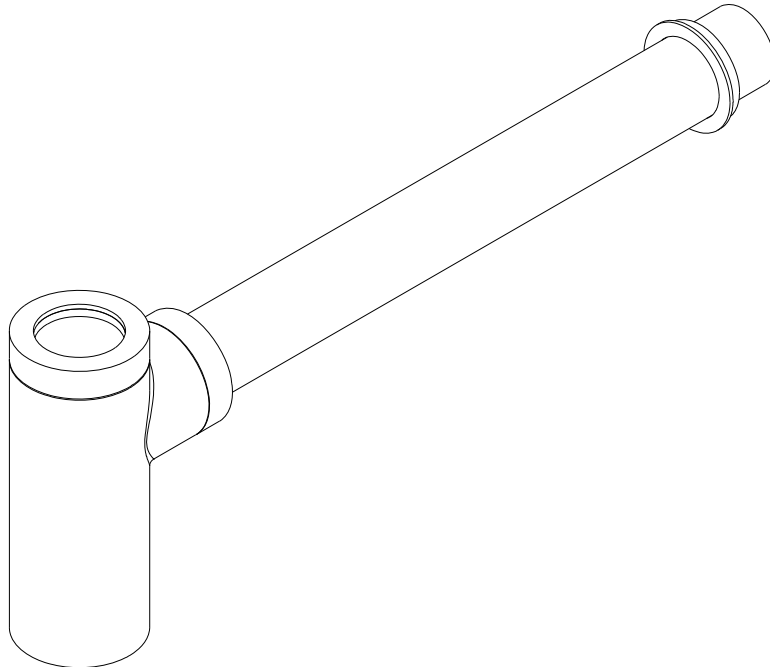
301-2



Codes / Standards Compliance

Meets or exceeds the following at date of manufacture:

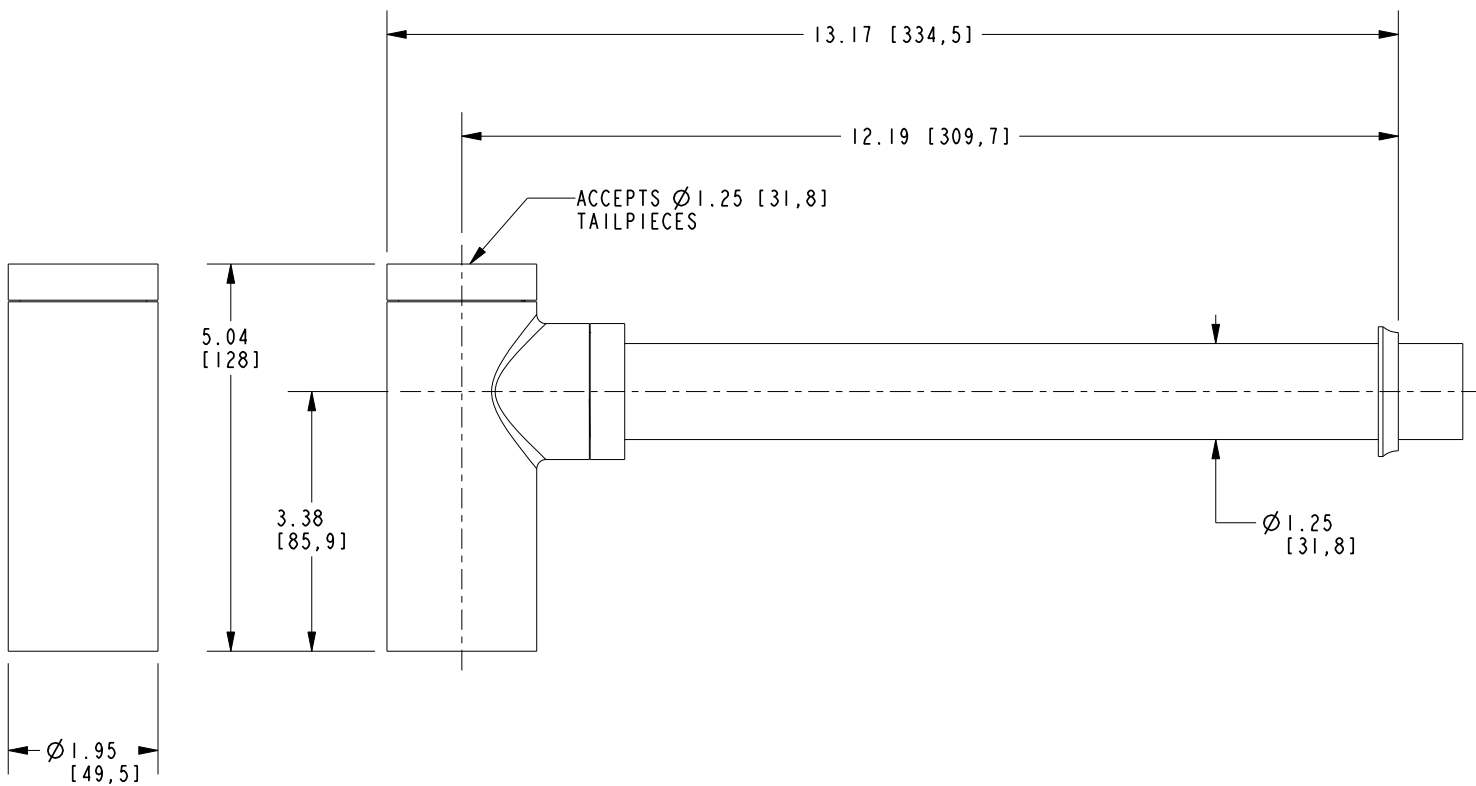
ASME A112.18.2/CSA B125.2
IAPMO/UPC
Not MASS compliant
All applicable US Federal and State material regulations



301-2

PRODUCT DIMENSIONS *(Units are in inches)*

Product Dimensions are provided for reference only. For specific product installation guidelines, please reference the Installation Instructions of the product being installed.



CONTEMPORARY P TRAP, ROUND

301-2

Page 2 of 2
EN- 4783
REV F

NEWPORT BRASS
Flawless Beauty. From Faucet to Finish.

t: 949.417.5207 | www.newportbrass.com
©2024 Brasstech, Inc.