

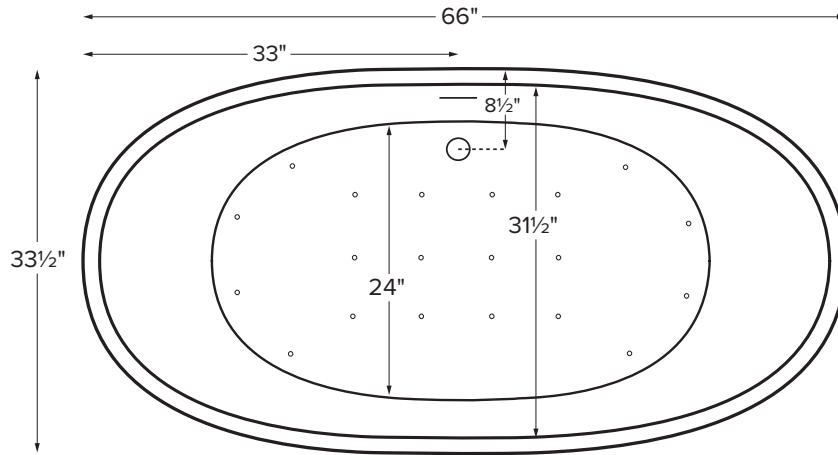


Features an integrated overflow.

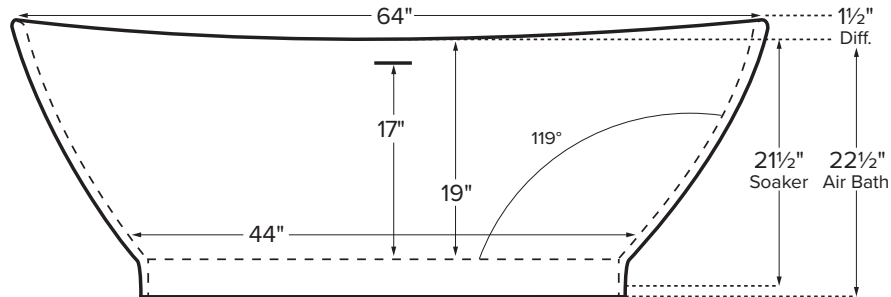
Boutique Collection Tubs

Elise

| |
|--|
| MODEL 230 |
| 66" x 33.5" x 21.5"/22.5" |
| FREESTANDING 90 gal to overflow |
| SculptureStone® |
| 270 lbs / 122 kg soaker 300 lbs / 136 kg airbath |
| Filling this tub to the maximum may require an above average size or dedicated water heater. |



Shown above as an Air Bath.



ELECTRICAL COMPONENTS & SPECIFICATIONS

Required Electrical Service - 110 Volt

| Hydrotherapy Package | Components Included | GFCI |
|----------------------|---------------------|----------|
| Air Massage | heated blower | 1-15 amp |

Electrical requirements may change with the addition of optional therapy components. See specific option details or installation information.
CSA Certified C/US; ANSI Z124.1 and ANSI 112.19.7 and ANSI 112.19.7

See the Installation & Operation Manual for more details.
MTI's Customer Service: Monday-Friday 8am-6pm EST
800-783-8827 or service@mtibaths.com

IMPORTANT ORDERING & INSTALLATION INFORMATION

- Before ordering or installing, please consider future access to equipment.
- Includes an integrated overflow with toe tap drain in chrome finish. May be specified without an overflow (see local codes before ordering without an overflow).
- Air baths require job site preparation for remote installation of the blower and required check valve. Check valve must be installed higher than the rim of the tub.
- Waterproof remote control included with air bath. Keypad shipped loose may be remote mounted on nearby surface/wall.
- Faucet valves cannot be mounted on this tub model.

- Before discarding tub crate, check for accessories that may be packaged inside.
- All product measurements are $\pm 1/2"$.
- Specifications and configurations are subject to change without notice.
- Measurements herein supersede all others published prior to publication date below.

CSA # MTCT-230

©2024 by MTI Baths, Inc. Modification Rights Reserved

1 of 2



Rev. 04 16 2024

For more information on options and accessories go to SculptureStone® Tubs Options on mtibaths.com

Elise

MODEL #: 230

66" x 33.5" x 21.5"/22.5"

- Blower & required check valve for airbath must be remote mounted.
- Check valve must be installed higher than the rim of the tub.
- See the Installation & Operation Manual for more details.

| Hydrotherapy | Package Contents | Part # | Finish | MSRP |
|--------------|--|----------|---------------------|----------|
| Soaker | Soaking bath - no jets. Includes an integrated slotted overflow with a toe-tap drain kit. | S230 | soft matte | \$8,550 |
| | | S230GL | hand-polished gloss | \$9,670 |
| Air Bath | 20 air jets, heated air blower, keypad, waterproof remote control, integrated slotted overflow with a toe-tap drain kit. | AST230 | soft matte | \$13,825 |
| | | AST230GL | hand-polished gloss | \$14,945 |

| Options <i>Must be ordered at time of purchase</i> |
|---|
| Quick Ship (QSPRI2) \$1,055 reduces lead time <i>Please call for availability</i> |
| Standard Color White Biscuit Color Upgrade (SSBI) \$320 <i>Additional material colors available for projects only. Please call MTI.</i> |
| Accessories |
| Teak Bath Mat (TKMAT3018) \$840 Measures 30" x 17.5" x 1" <i>Custom sizes also available. Contact MTI for details.</i> |
| SculptureStone® Tub Tray No Stemware Holder (SSTRAY1) \$350 matte (SSTRAY1GL) gloss \$350 With Stemware Holder (SSTRAY2) \$465 matte (SSTRAY2GL) gloss \$465 <i>Order with tub for best color match</i> |
| Teak Tub Tray Slatted (TK-TRAY1) \$515 Solid (TK-TRAY2) \$585 <i>Order with tub for best fit</i> |

| Boutique Accessories | |
|---|--|
| Packaging / Handling Fee Applies | |
| SculptureStone® Bathroom Table (TABLE) \$850 matte finish (TABLEGL) \$1,295 gloss finish <i>Order with tub for best color match</i> | |
| SculptureStone® Standard Faucet Stand | |
| Small - 3-hole capacity 14¼" w x 20½" h Matte (STAND) \$745 Gloss (STANDGL) \$1,190 | Large - 5-hole capacity 22" w x 21½" h Matte (STANDL) \$880 Gloss (STANDLGL) \$1,325 |
| SculptureStone® Premium Faucet Stand | |
| 15" w x 39" h Matte (SSFSR3915MT) \$2,435 Gloss (SSFSR3915GL) \$2,800 | 10" w x 39" h Matte (SSFSR3910MT) \$2,200 Gloss (SSFSR3910GL) \$2,600 |
| 20" w x 23" h Matte (SSFSR2320MT) \$1,990 Gloss (SSFSR2320GL) \$2,385 | 15" w x 23" h Matte (SSFSR2315MT) \$1,880 Gloss (SSFSR2315GL) \$2,245 |
| SculptureStone® Premium Component Stand | |
| 20" l x 22.5" h Matte (SSPX1MT) \$2,060 Gloss (SSPX1GL) \$2,720 <i>Compatible with select tub models.</i> <i>Go to www.mtibaths.com</i> | |

| Drains & Overflow Kits <i>Must be ordered at time of purchase</i> | |
|---|--|
| Toe Tap Drain Cover Finishes PVC drain - Chrome included + \$50 upcharge Br. Nickel (WIOBN), Pol. Nickel (WIOPN) + \$90 upcharge Matte Black (WIOBM) + \$110 upcharge Oil-Rubbed Bronze+ (WIOOR) + \$660 upcharge Special Finish* (WIOSF) <i>Send finish sample to MTI Baths for best match.</i> | Toe Tap SculptureStone® Drain Cover Finishes Upgrade is in lieu of standard chrome to tap drain cover. White only + \$95 upcharge Matte Finish (SSWIOMT) + \$115 upcharge Gloss Finish (SSWIOGL) Brass Tailpiece (WIOBS) \$90 in addition to finish charge listed above Quick Drain Kit (WOQ) \$485 |

* MTI has selected an oil-rubbed bronze finish that is compatible with Delta and many other manufacturers. To ensure best match, order as a Special Finish and submit a sample.
CSA # MTCT-230

* Allow 2-4 weeks lead time for Special Finishes.
Send sample for best match.

