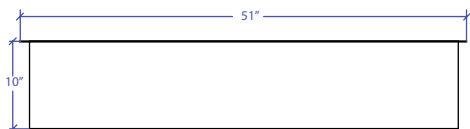
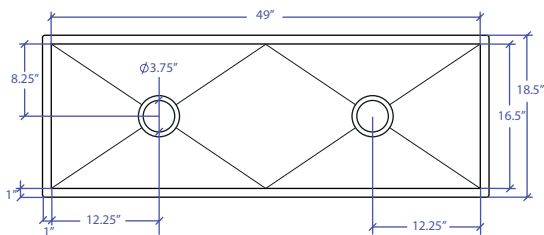


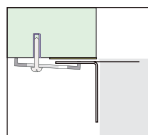
# WORKSTATION MUWS-649GPSB



INDUSTRY'S ONLY STAINLESS STEEL SINK DESIGNED SPECIFICALLY TO BE FLUSH-MOUNTED

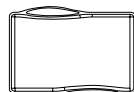


- FEATURES**  
 16-gauge type 304 stainless steel  
 EZ clean bevel basin design  
 Space saving/ dual slide rail design  
 Dual drain design
- TECHNICAL INFORMATION**  
 External dimension: 51" Lx18.5" Wx10" D  
 Basin dimensions: 49" Lx16.5" Wx10" D  
 Rim width: 1"  
 Rim thickness: 1/16"
- FINISHES**  
 Graphite PVD Satin Brushed stainless steel
- INSTALLATION OPTIONS**  
 Under-mount
- MINIMUM CABINET SIZE (I.D.)**  
 Under-mount 53"
- INSTALLATION TYPE**



Under-mount

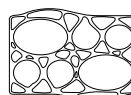
## INCLUDED ACCESSORIES



MWCB-651GPBB  
Cutting Board



MWSM-651GPSB  
Salad Mixer



MWBM-651GPSB  
Bain Marie



MWC-651GPSB  
Colander

## OPTIONAL ACCESSORIES



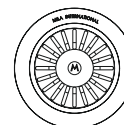
MBG-6520GPSB  
Basin Grid



MBG-101GPSB  
Basin Grid



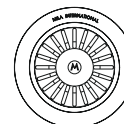
MWSS-651GPSB  
Side Sink



MKD-101GPSB  
Strainer



MDC-101GPSB  
Disposal Collar



MDC-102GPSB  
Disposal Collar

US Patent No. 9,988,799 CA Patent No. 2579506  
International Patent Pending

PROJECT INFORMATION			
Project			
Date	/ /	QTY	
Specifier			
Contact			
Note			

UNDER-MOUNT