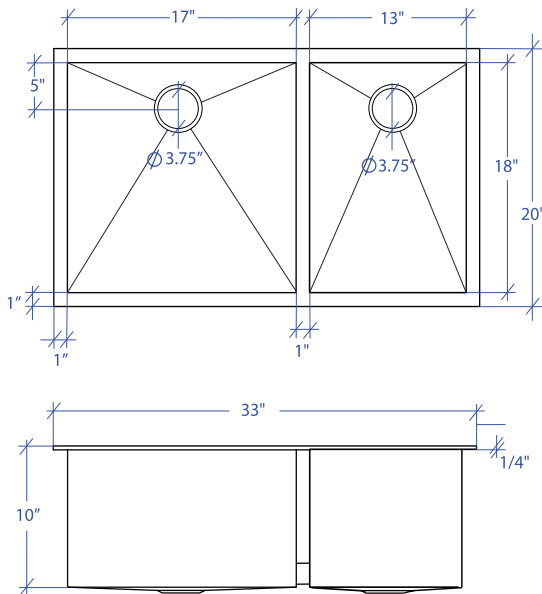


ATELIER MTD-803SB



*Custom ADA compliant sinks are available



- **FEATURES**
16-gauge type 304 stainless steel
TRI-MOUNT™ installation system

- **TECHNICAL INFORMATION**
External dimension: 33" L x 20" W x 10" D
Basin dimensions:
Left: 17" L x 18" W x 10" D
Right: 13" L x 18" W x 10" D
Rim width: 1"
Rim thickness: 1/4"

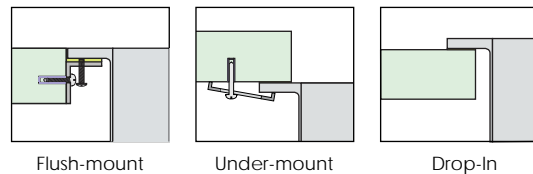
- **FINISHES**
Satin brushed stainless steel

- **INSTALLATION OPTIONS**
Flush-mount
Drop-in
Under-mount

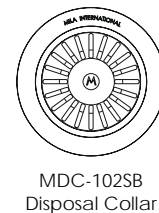
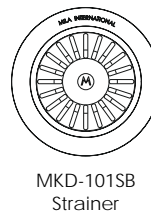
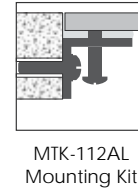
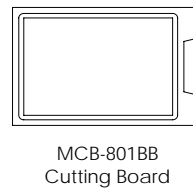
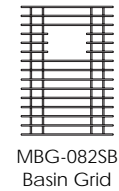
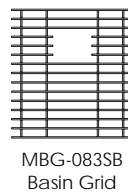
- **MINIMUM CABINET SIZE (I.D.)**
Flush-mount 36"
Drop-In 33"
Under-mount 37"

- **INDUSTRY'S ONLY STAINLESS STEEL SINK DESIGNED SPECIFICALLY TO BE FLUSH-MOUNTED**

- **U.S. PATENT NO. 9,988,799**
- **CANADIAN PATENT NO. 2579506**
- **TRI-MOUNT INSTALLATION**



- **ACCESSORIES**



PROJECT INFORMATION			
Project			
Date	/ /	QTY	
Specifier			
Contact			
Note			