

# ORION MOUS-652GDSB

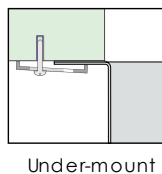


\*Custom ADA compliant sinks are available

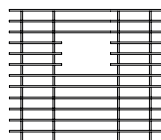
- **FEATURES**  
16-gauge type 304 stainless steel  
Bevel basin design
- **TECHNICAL INFORMATION**  
External dimension: 22"Lx18.5"Wx10"D  
Basin dimensions: 20"Lx16.5"Wx10"D
- **FINISHES**  
Gold PVD Satin Brushed stainless steel
- **INSTALLATION OPTIONS**  
Under-mount
- **MINIMUM CABINET SIZE (I.D.)**  
Under-mount 25"

• US DESIGN PATENT D618,324 S

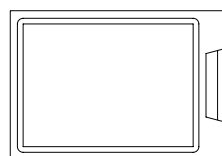
• DUAL-MOUNT INSTALLATION



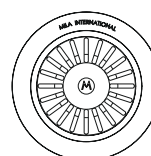
• ACCESSORY OPTIONS



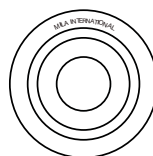
MBG-6507GDSB  
Basin Grid



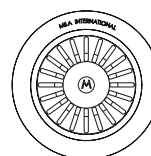
MCB-651GDBB  
Cutting Board



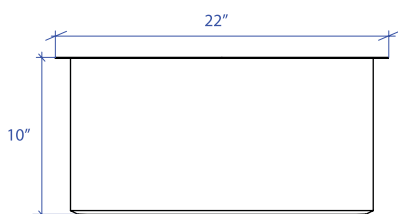
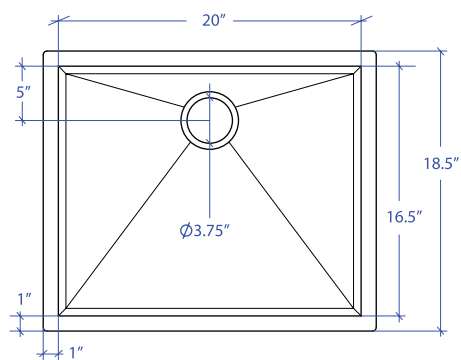
MKD-101GDSB  
Strainer



MKD-101GDSB  
Disposal Collar



MDC-102GDSB  
Disposal Collar



PROJECT INFORMATION			
Project			
Date	/ /	QTY	
Specifier			
Contact			
Note			