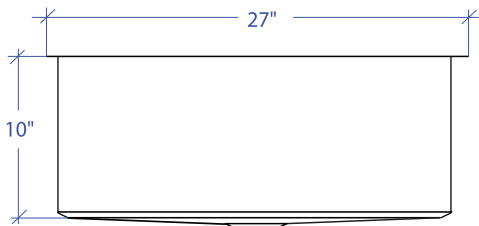
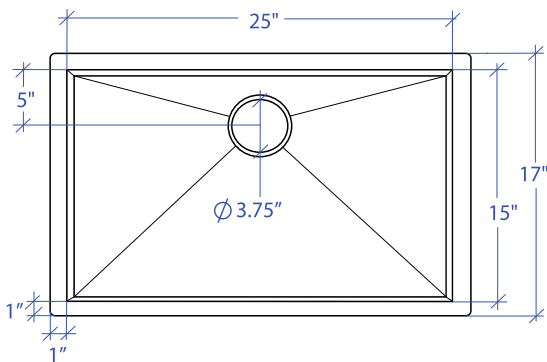


# ORION MOUS-503SB



\*Custom ADA compliant sinks are available



## • FEATURES

- 16-gauge type 304 stainless steel
- Bevel basin design

## • TECHNICAL INFORMATION

- External dimension: 27"Lx17"Wx10"D
- Basin dimensions: 25"Lx15"Wx10"D
- Rim width: 1"
- Rim thickness: 1/16"

## • FINISHES

- Satin Brushed stainless steel

## • INSTALLATION OPTIONS

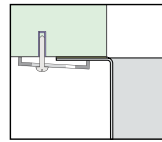
- Under-mount

## • MINIMUM CABINET SIZE (I.D.)

- Under-mount 30"

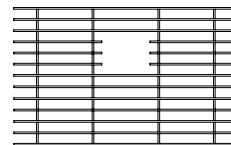
## • US DESIGN PATENT D618,324 S

## • DUAL-MOUNT INSTALLATION

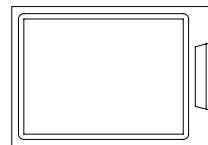


Under-mount

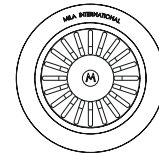
## • ACCESSORY OPTIONS



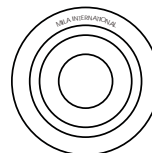
MBG-055SB  
Basin Grid



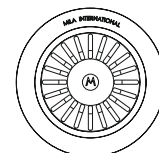
MCB-501BB  
Cutting Board



MKD-101SB  
Strainer



MKD-101SB  
Disposal Collar



MDC-102SB  
Disposal Collar

PROJECT INFORMATION			
Project			
Date	/ /	QTY	
Specifier			
Contact			
Note			