

ORION MOUS-503GDSB



*Custom ADA compliant sinks are available

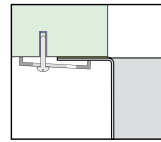
- **FEATURES**
16-gauge type 304 stainless steel
Bevel basin design
- **TECHNICAL INFORMATION**
External dimension: 27"Lx17"Wx10"D
Basin dimensions: 25"Lx15"Wx10"D
Rim width: 1"
Rim thickness: 1/16"

- **FINISHES**
Gold PVD satin brushed stainless steel
- **INSTALLATION OPTIONS**
Under-mount

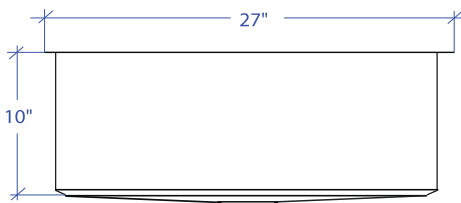
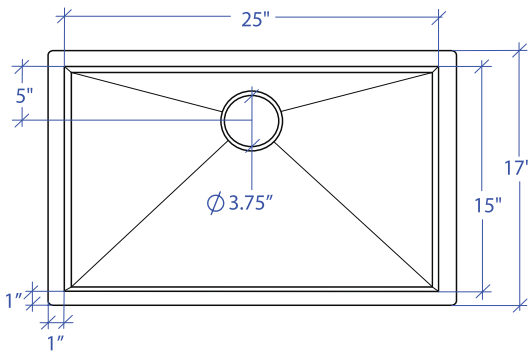
- **MINIMUM CABINET SIZE (I.D.)**
Under-mount 30"

- **US DESIGN PATENT D618,324 S**

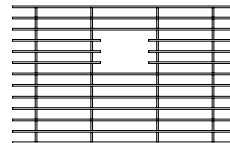
- **DUAL-MOUNT INSTALLATION**



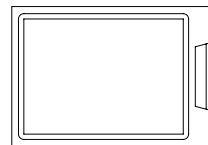
Under-mount



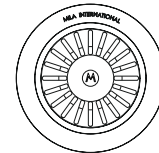
- **ACCESSORY OPTIONS**



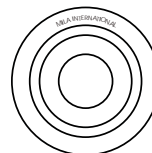
MBG-055GDSB
Basin Grid



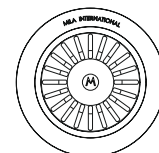
MCB-501BB
Cutting Board



MKD-101GDSB
Strainer



MDC-101GDSB
Disposal Collar



MDC-102GDSB
Disposal Collar

PROJECT INFORMATION			
Project			
Date	/ /	QTY	
Specifier			
Contact			
Note			