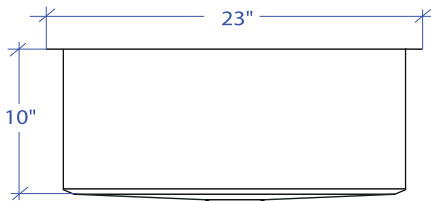
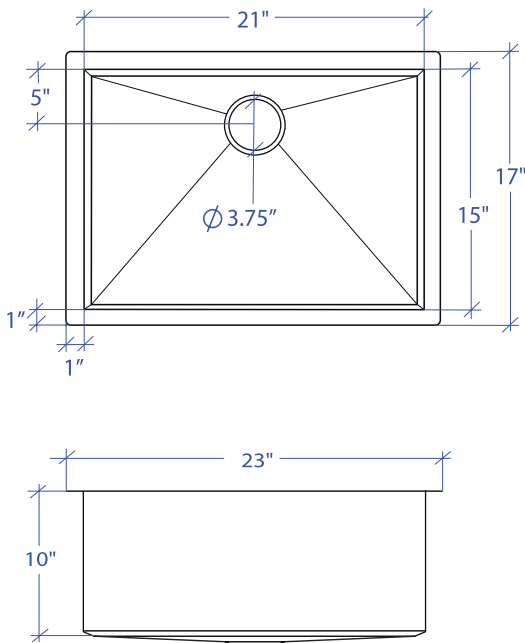


ORION MOUS-502GDSB



*Custom ADA compliant sinks are available



• FEATURES

16-gauge type 304 stainless steel
Bevel basin design

• TECHNICAL INFORMATION

External dimension: 23" L x 17.5" W x 10" D
Basin dimensions: 21" L x 15" W x 10" D
Rim width: 1"
Rim thickness: 1/16"

• FINISHES

Gold PVD Satin Brushed stainless steel

• INSTALLATION OPTIONS

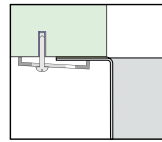
Under-mount

• MINIMUM CABINET SIZE (I.D.)

Under-mount 26"

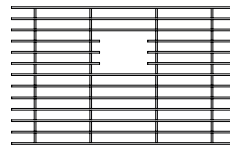
• US DESIGN PATENT D618,324 S

• DUAL-MOUNT INSTALLATION

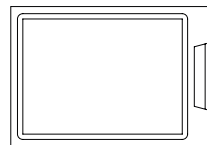


Under-mount

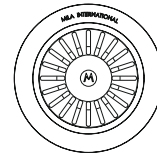
• ACCESSORY OPTIONS



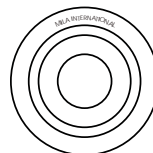
MBG-054GDSB
Basin Grid



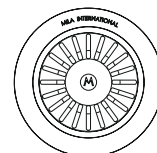
MCB-501BB
Cutting Board



MKD-101GDSB
Strainer



MDC-101GDSB
Disposal Collar



MDC-102GDSB
Disposal Collar

PROJECT INFORMATION

Project			
Date	/ /	QTY	
Specifier			
Contact			
Note			