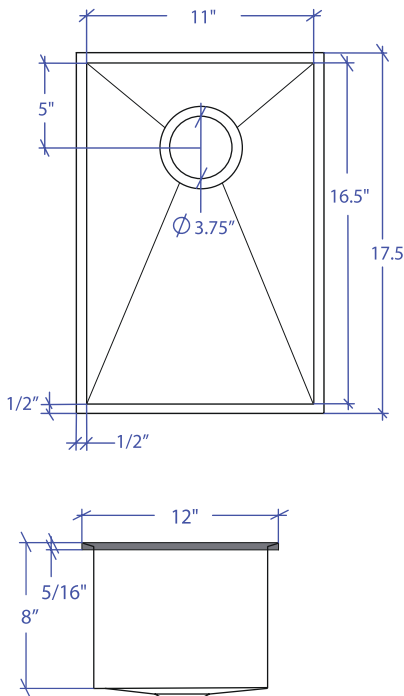


# LOUVRE MLFS-651GPSB



\*Flush-Mount Installation Kit is included with each sink  
\*Custom ADA compliant versions are available



## • FEATURES

- 16-gauge type 304 stainless steel
- Stainless steel rim support tubing
- Bevel rim and basin design

## • TECHNICAL INFORMATION

- External dimension: 12" L x 17.5" W x 8" D
- Basin dimensions: 11" L x 16.5" W x 8" D
- Rim width: 1/2"
- Rim thickness: 5/16"

## • FINISHES

- Graphite PVD satin brushed stainless steel

## • INSTALLATION OPTIONS

- Flush-mount

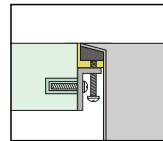
## • MINIMUM CABINET SIZE (I.D.)

- Flush-mount 15"

## • INDUSTRY'S ONLY STAINLESS STEEL SINK DESIGNED SPECIFICALLY TO BE FLUSH-MOUNTED

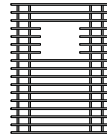
## • INTERNATIONAL PATENT PENDING

## • FLUSH-MOUNT INSTALLATION

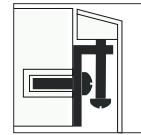


Flush-mount

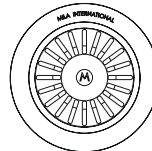
## • ACCESSORIES OPTIONS



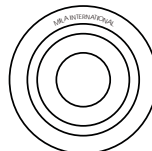
MBG-6515GPSB  
Basin Grid



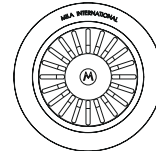
Flush Mount Kit  
(Included)  
MTK-614AL



MKD-101GPSB  
Strainer



MDC-101GPSB  
Disposal Collar



MDC-102GPSB  
Disposal Collar

PROJECT INFORMATION			
Project			
Date	/ /	QTY	
Specifier			
Contact			
Note			

FLUSH-MOUNT