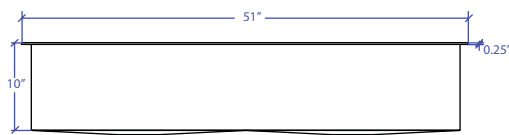
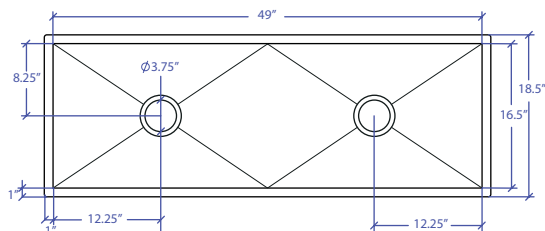


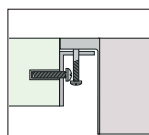
# WORKSTATION MFWS-649SB



INDUSTRY'S ONLY STAINLESS STEEL SINK DESIGNED SPECIFICALLY TO BE FLUSH-MOUNTED



- FEATURES**
  - 16-gauge type 304 stainless steel
  - EZ clean bevel basin design
  - Space saving/ dual slide rail design
  - Dual drain design
- TECHNICAL INFORMATION**
  - External dimension: 51"Lx18.5"Wx10"D
  - Basin dimensions: 49"Lx16.5"Wx10"D
  - Rim width: 1"
  - Rim thickness: 1/4"
  - Rim Corner: 1/4" round
- FINISHES**
  - Satin Brushed stainless steel
- INSTALLATION OPTIONS**
  - Flush-mount
- MINIMUM CABINET SIZE (I.D.)**
  - Flush-mount 53"
- INSTALLATION TYPE**

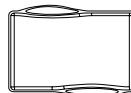


Flush-mount

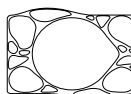
- INCLUDED ACCESSORIES**



Flush Mount Kit  
MTK-621AL



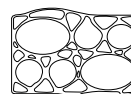
MWCB-651BB  
Cutting Board



MWSM-651SB  
Salad Mixer



MWC-651SB  
Colander



MWBM-651SB  
Bain Marie

- OPTIONAL ACCESSORIES**



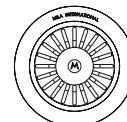
MBG-6520SB  
Basin Grid



MBG-6520SB  
Basin Grid



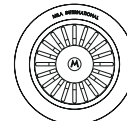
MWSS-651SB  
Side Sink



MKD-101SB  
Strainer



MDC-101SB  
Disposal Collar



MDC-102SB  
Disposal Collar

US Patent No. 9,988,799 CA Patent No. 2579506  
International Patent Pending

PROJECT INFORMATION			
Project			
Date	/ /	QTY	
Specifier			
Contact			
Note			

TRI-MOUNT