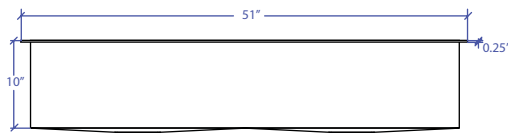
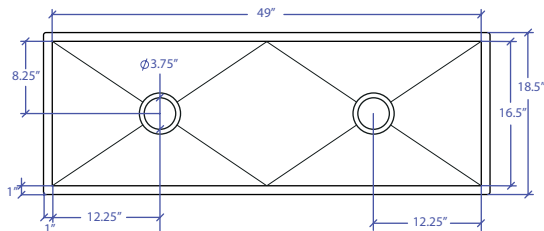


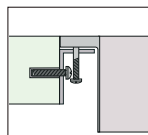
# WORKSTATION MFWS-649GPSB



INDUSTRY'S ONLY STAINLESS STEEL SINK DESIGNED SPECIFICALLY TO BE FLUSH-MOUNTED



- **FEATURES**
  - 16-gauge type 304 stainless steel
  - EZ clean bevel basin design
  - Space saving/ dual slide rail design
  - Dual drain design
- **TECHNICAL INFORMATION**
  - External dimension: 51"Lx18.5"Wx10"D
  - Basin dimensions: 49"Lx16.5"Wx10"D
  - Rim width: 1"
  - Rim thickness: 1/4"
  - Rim Corner: 1/4" round
- **FINISHES**
  - Graphite PVD Satin Brushed stainless steel
- **INSTALLATION OPTIONS**
  - Flush-mount
- **MINIMUM CABINET SIZE (I.D.)**
  - Flush-mount 53"
- **INSTALLATION TYPE**



Flush-mount

- **INCLUDED ACCESSORIES**



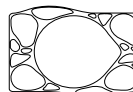
Flush Mount Kit  
MTK-621AL



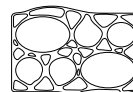
MWCB-651GPBB  
Cutting Board



MWC-651GPSB  
Colander



MWSM-651GPSB  
Salad Mixer



MWBM-651GPSB  
Bain Marie

- **OPTIONAL ACCESSORIES**



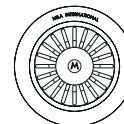
MBG-6520GPSB  
Basin Grid



MBG-6520GPSB  
Basin Grid



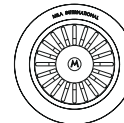
MWSS-651GPSB  
Side Sink



MKD-101GPSB  
Strainer



MDC-101GPSB  
Disposal Collar



MDC-102GPSB  
Disposal Collar

US Patent No. 9,988,799 CA Patent No. 2579506  
International Patent Pending

PROJECT INFORMATION			
Project			
Date	/ /	QTY	
Specifier			
Contact			
Note			

TRI-MOUNT