

Jute® | K-99543-R

36" wall-hung bathroom vanity cabinet

Features

- Catalyzed conversion varnish provides a durable moisture-resistant finish
- One door and one drawer on right
- Frameless construction with full-overlay doors and drawer
- Three-way adjustable soft-close door hinges for easy cabinet access
- Full-extension 18" (457 mm) depth drawer with soft-close undermount slides for smooth opening
- Solid wood drawer with dovetail joint construction
- Wall-hung design offers a clean, streamlined look



Available Colors/Finishes

Color tiles intended for reference only.

- 1WA Linen White
- 1WM Walnut Flax



Codes/Standards

EPA TSCA Title VI/CARB P2

Technical Information

All product dimensions are nominal.

Lighting Included: No

Cutout

Width: 36" (914 mm)

Height: 19-1/2" (495 mm)

Material

- Solid wood and veneers
 - Wood is a living material, and its beauty is enhanced by natural variations in grain, color, and pattern. No two pieces of wood are exactly the same, and the color will change with age, temperature, and exposure to light
 - The nature of wood grain can cause variations in stain depth. Our expert craftspeople hand-apply the stain to blend these variations
-

Recommended Products/Accessories

K-28250 Silestone® 37" quartz vanity top with rectangular cutout

K-28263 Silestone® quartz 37" backsplash

K-99565 Vanity legs

K-20000 20-1/2" rectangular undermount bathroom sink

K-99688 3" cabinet pull

K-28266 Silestone® quartz side splash

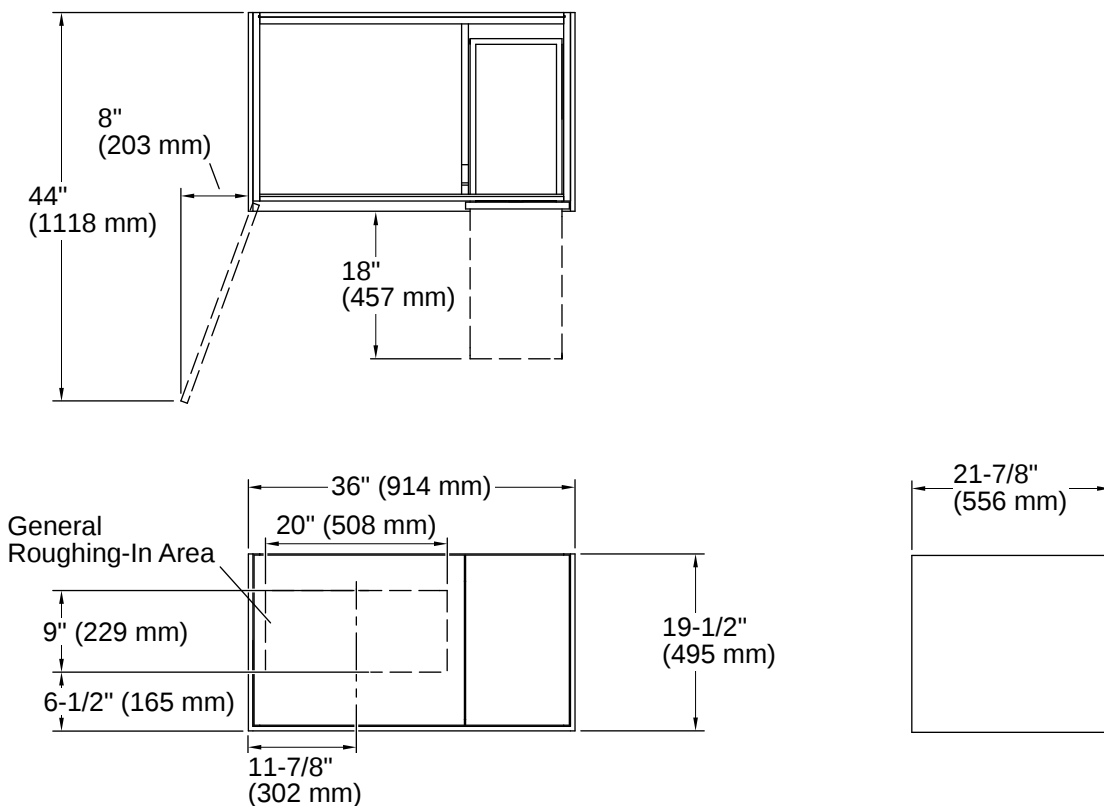
Warranty

See website for detailed warranty information.

KOHLER® One-Year Limited Warranty



1-800-4KOHLER (1-800-456-4537)
Kohler Co. reserves the right to make revisions without notice to product specifications.
For the most current specification sheet, go to www.kohler.com USA or www.kohler.ca Canada.
4-15-2026 4:23 - US-CA



Installation Notes

Install this product according to the installation instructions.

Decorative cabinet hardware is not supplied. Refer to the KOHLER bath accessories line for recommended cabinet hardware to complement your vanity.

Select the type of fastener based upon the wall material. Two 500 lb (227 kg) minimum load bearing fasteners are recommended.

