

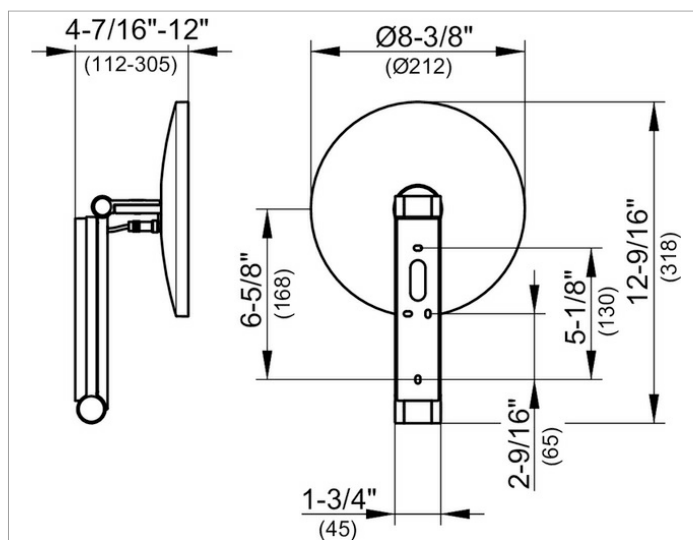
## Cosmetic mirrors

17612019053 Cosmetic mirror

### PRODUCT



### DRAWING



### PRODUCT ATTRIBUTES

illuminated, 1 light color 6000 kelvin (day light),  
operation by light switch, in-wall cable layout,  
on pivoted arm adjustable in three dimensions,  
one-sided mirror, magnification factor x 5

Operation:

Light switch (not included in delivery)

Power supply:

Connection via wall socket

12 V in-wall adapter, input 110 V,

standby consumption: 0 watt

Illumination:

LED 4.5 watt (lifespan > 50.000 hours)

### SURFACE

chrome-plated

### SPECIFICATIONS

KEUCO iLook\_move cosmetic mirror, 17612019053

high quality cosmetic mirror, round,  
chrome-plated, illuminated with 1 light color 6000 kelvin (day light),  
operated by light switch, in-wall cable layout  
on pivoted rail,

surface wall-mounted with 4 fixing points

for an optimal load distribution

adjustable in three dimensions, one-sided mirror, concave

magnification factor x 5,

Height wall mounting 7-1/8", Width ca. 1-3/4",

max. Height ca. 19-11/16", External diameter 8-3/8",

max. depth ca. 11-3/4",

delivery includes in-wall power supply and lowvoltage  
connection cable (19-11/16")

Power supply via wall socket

12 V in-wall adapter, input 110 V,

standby consumption: 0 watt

**Warranty:** KEUCO products are covered by a 5-year manufacturer's warranty, in effect from the date of purchase. During this time, proven product defects will be remedied free of charge. Warranty claims must be filed in writing, including a detailed description of the defect immediately after a defect has occurred. For a copy of our detailed product warranty policy, please contact us at [office-usa@keuco.com](mailto:office-usa@keuco.com).

**Installation:** KEUCO products must be installed by a qualified professional in accordance with the respective installation guidelines and any applicable federal / local building codes and regulations.