

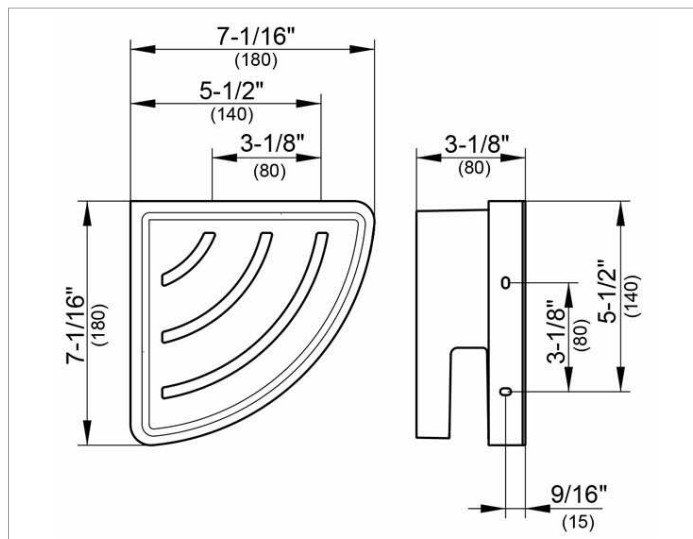
**Collection Moll**

**1275701000 Shower basket for corner installation**

**PRODUCT**



**DRAWING**



**PRODUCT ATTRIBUTES**

two parts: metal bracket and detachable synthetic insert, soap resistant, shatterproof, UV-protected

**SURFACE**

chrome-plated/white

**SPECIFICATIONS**

KEUCO COLLECTION MOLL shower basket for corner, wall mounted 12757010000  
 Chrome-plated metal basket with removable, soap resistant, break-proof and UV-protected, white, easy to clean  
 Total depth 7-1/16", height 3-1/8", leg length 7-1/16"  
 The shower basket is fitted with four hidden fixing points incl. corrosion-free mounting material

**Warranty:** KEUCO products are covered by a 5-year manufacturer's warranty, in effect from the date of purchase. During this time, proven product defects will be remedied free of charge. Warranty claims must be filed in writing, including a detailed description of the defect immediately after a defect has occurred. For a copy of our detailed product warranty policy, please contact us at [office-usa@keuco.com](mailto:office-usa@keuco.com).  
**Installation:** KEUCO products must be installed by a qualified professional in accordance with the respective installation guidelines and any applicable federal / local building codes and regulations.