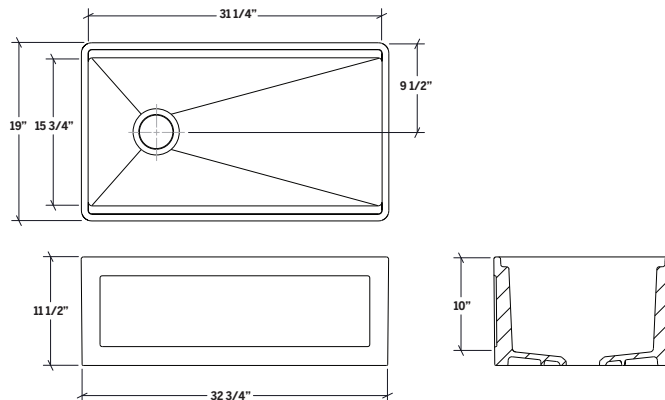


## FIRA SINK

APRON FRONT UNDERMOUNT SINGLE BOWL KITCHEN SINK WITH LEDGE AND WALNUT BOARD








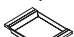


### Specifications

<b>Model Color</b>	<b>Code</b>
<input type="checkbox"/> Glossy White	093319
<input checked="" type="checkbox"/> Matte Black*	093320
<input type="checkbox"/> Taupe Grey, Matte*	093321
<b>Collection</b>	FIRA
<b>Bowl dimensions</b>	31 1/4" × 15 3/4" × 10"
<b>Overall dimensions</b>	32 3/4" × 19" × 11 1/2"
<b>Recommended cabinet</b>	36"
<b>Accessory material</b>	Walnut

### Included accessories

<b>Cutting board</b>	<b>210060</b>
----------------------	---------------

### Recommended accessories

	<b>Drain</b>	<b>100080</b>
	<b>Grid</b>	<b>200939</b>
	<b>Colander - 4" deep</b>	<b>205038</b>
	<b>Serving bin - 4" deep</b>	<b>205039</b>
	<b>Serving bin with bowls (4)</b>	<b>225219</b>
	<b>Serving tray</b>	<b>205041</b>
	<b>Cutting board</b>	<b>210061</b>
	<b>Drying rack</b>	<b>215009</b>

### Features

- Designed in Canada, handcrafted in Italy
- Integrated accessory ledge to sit full range of accessories
- Includes a solid walnut cutting board
- 3/4" thick walls for optimized work space
- Product dimensional variability  $\pm 3/16"$ , due to manufacturing process
- Made of fireclay and glazed on all sides
- Offset 3-1/2" drain
- Sloped bottom for maximized drainage
- Waste disposal unit compatible, recommended to confirm waste disposal or drain maximal thickness specifications
- No template provided, recommended to have the sink on hand for final sizing of cabinet and countertop
- Certifications : ASME A112.19.2/CSA B45.1

### Warranty

JULIEN Inc. offers warranties against manufacturing defects on most of its products, please visit our website [homerefinelements.ca](http://homerefinelements.ca) for complete product coverage.

\*These colors are a limited edition offering