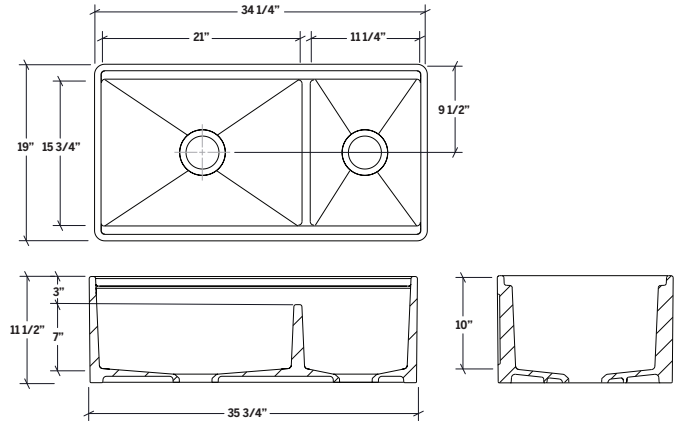


## FIRA SET

APRON FRONT UNDERMOUNT DOUBLE BOWL KITCHEN SINK WITH LEDGE AND WALNUT ACCESSORIES









### Specifications

<b>Model Color</b>	<b>Code</b>
□ Glossy White	005443
■ Matte Black*	005447
■ Taupe Grey, Matte*	005433
<b>Collection</b>	FIRA
<b>Bowl dimensions</b>	L 21" × 15 3/4" × 10" R 11 1/4" × 15 3/4" × 10"
<b>Overall dimensions</b>	35 3/4" × 19" × 11 1/2"
<b>Recommended cabinet</b>	39"
<b>Accessories handle material</b>	Walnut

### Included accessories

<b>Grids</b>	200942 200943
<b>Cutting board</b>	210060
<b>Colander</b>	205038
<b>Serving bin with bowls (4)</b>	225219

### Recommended accessories

	<b>Drain</b>	100080
	<b>Serving bin</b>	205039
	<b>Serving bin with bowls (2)</b>	205044
	<b>Serving tray</b>	205041
	<b>Cutting board</b>	210061
	<b>Drying rack</b>	215009

### Features

- Designed in Canada, handcrafted in Italy
- Integrated accessory ledge to sit full range of accessories
- Many solid walnut accessories included depending on the width of the sink to be used on accessory ledge
- Bottom grid included to protect the surface of the sink
- Flat apron front design
- Two deep 10" bowls and 3/4" thick walls for optimized work space
- Product dimensional variability  $\pm 3/16"$ , due to manufacturing process
- Made of fireclay and glazed on all sides, white gloss finish
- Two center 3-1/2" drains
- Sloped bottom for maximized drainage
- Waste disposal unit compatible, recommended to confirm waste disposal or drain maximal thickness specifications
- No template provided, recommended to have the sink on hand for final sizing of cabinet and countertop
- Certifications: ASME A112.19.2/CSA B45.1

### Warranty

JULIEN Inc. offers warranties against manufacturing defects on most of its products, please visit our website [homerefinelements.ca](http://homerefinelements.ca) for complete product coverage.

\*These colors are a limited edition offering