

**W4283501-4, W4283502-4, W4283516-4, W4283549-4 - Sevaun Center Set Faucet**

## Description

**SEVAUN CENTER SET**

- Lever handles
- Washerless cartridges
- Push style brass pop-up
- 1.2 GPM

## Standards

- Complies with IAPMO UPC/cUPC
- California AB100 Complaint
- ADA Accessibility Guidelines for Buildings and Facilities - 427.4 Controlled Mechanisms
- CALGreen compliant
- EPA WaterSense Certified by IAPMO R&T



• W4283501-4

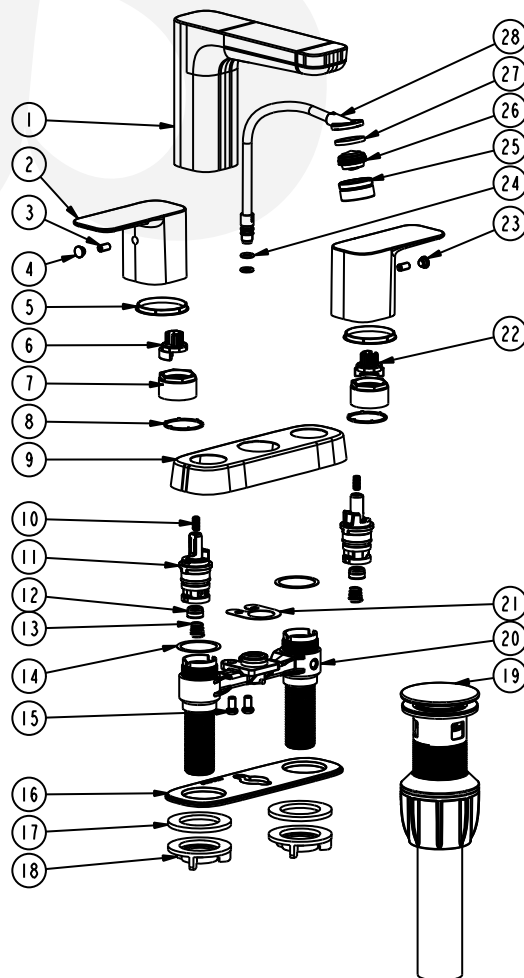
## Colors / Finishes

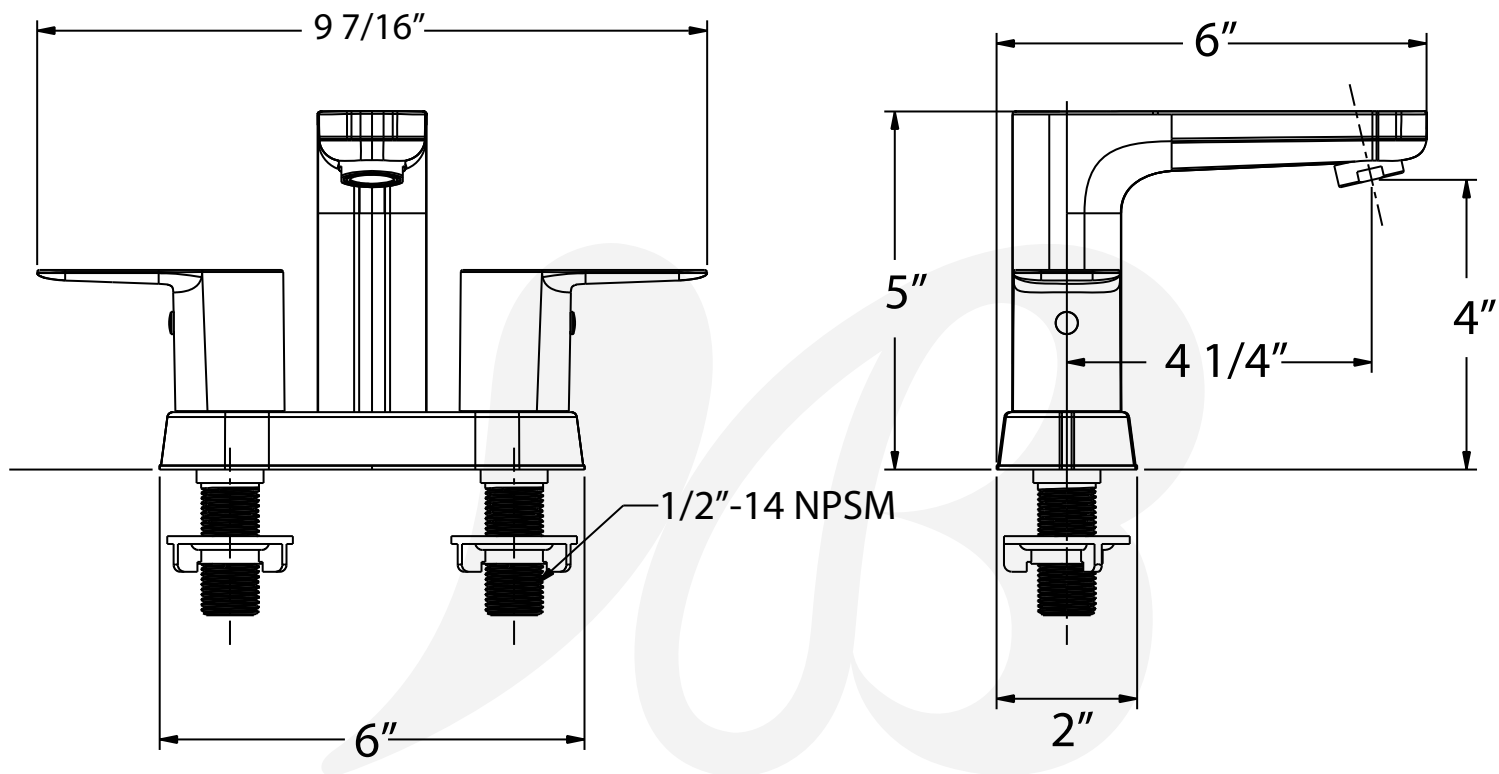
- W4283501-4** - Chrome
- W4283502-4** - PVD Satin Nickel
- W4283516-4** - PVD Satin Brass
- W4283549-4** - Matte Black

## BREAK DOWN

### Component Parts List

28	ATBP0650	OUTLET	1
27	CTWR0368	WASHER	1
26	ATBX0087	AERATOR	1
25	CTCB1068	COVER	1
24	CTRR0182	O-RING	2
23	CTCP0587-XD	CAP	1
22	CTCP0427	ADAPTER	1
21	CTWT0088	WASHER	1
20	ATBY0188	BODY	1
19	ATAA0145	POP-UP	1
18	CTNP0060	NUT	2
17	CTWR0217	WASHER	2
16	CTKP0186	垫片	1
15	CTST0010	SCREW	2
14	CTWT0076	WASHER	2
13	CTBT0079	SPRING	2
12	CTWR0304	WASHER	2
11	ATBA0125	CARTRIDGE	2
10	CTST0151	SCREW	2
9	CTCT0171	FACE PLATE	1
8	CTWP0075	WASHER	2
7	CTNZ0004	NUT	2
6	CTCP0426	ADAPTER	1
5	CTWP0232	WASHER	2
4	CTCP0587-XR	CAP	1
3	CTST0269	SCREW	2
2	CTHZ0786	HANDLE	2
1	CTFZ0044	SPOUT	1
NO.	Drawing No.	Part Description	Quantity





Item Number	Type	Date
W4283501-4, W4283502-4, W4283516-4, W4283549-4	Center Set	2/27/2023