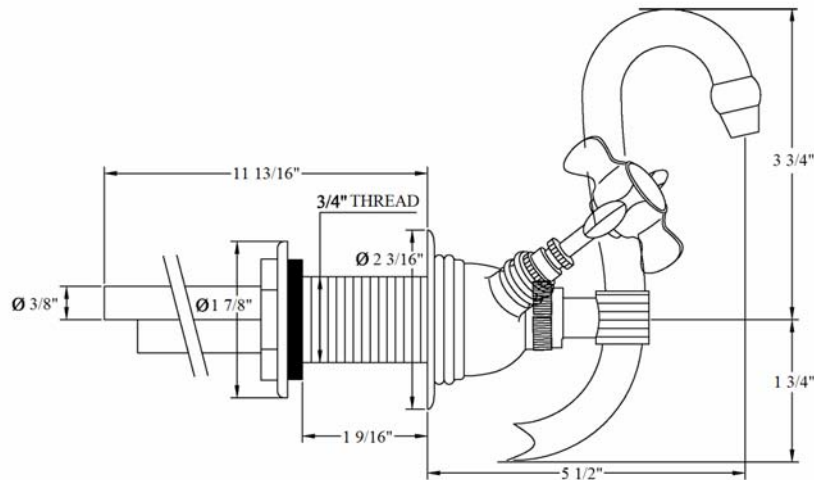


# 3055 – ‘Royale Verseuse’ Wall Mounted Mixer



Part #	Description
01	Hex Nut
02	Metal Ring & Rubber Washer
03	Aerator Cap
04	Threaded Stem
05	Escutcheon
06	Verseuse Spout-Ecobrass
07	Washer
08	Verseuse Deck Mount Body
09	Cross Handle
10	Aerator
12	¼ Turn Ceramic Cartridge
13	Cross Handle Stem
14	Rubber O-Ring
15	Cartridge Cover
16	Brass Handle Screw
17	Herbeau Ceramic Insert
24	Flow Restrictor

## Technical Information

- NSF / ANSI 61 & 372 / ASME A112.18.1 / CSA B125.1 / CEC AB1953 / WATERSENSE Certified
- Maximum Flow Rate Is 1.2 GPM With Low Flow Restrictor.
- 1 1/8" Hole Drilling.
- 3/8" Tube Connections.
- Cross Handles.
- ¼ Turn Ceramic Cartridges.
- Available Finishes Are French Weathered Brass(47), Polished Chrome(48), SoliBrass(49), Lacquered Matte Black Nickel(50), Old Gold(52), Old Silver(53), Polished Brass(55), Polished Nickel(56), Brushed Nickel(57), Satin Nickel(60), Antique Lacquered Copper(67), Antique Lacquered Brass(68), Weathered Brass(70), Lacquered Polished Black Nickel(71) and Lacquered Polished Copper(80).
- Please see cleaning Instructions:  
<http://herbeau.com/CleaningAll.pdf> for Finish Care & Maintenance Information.



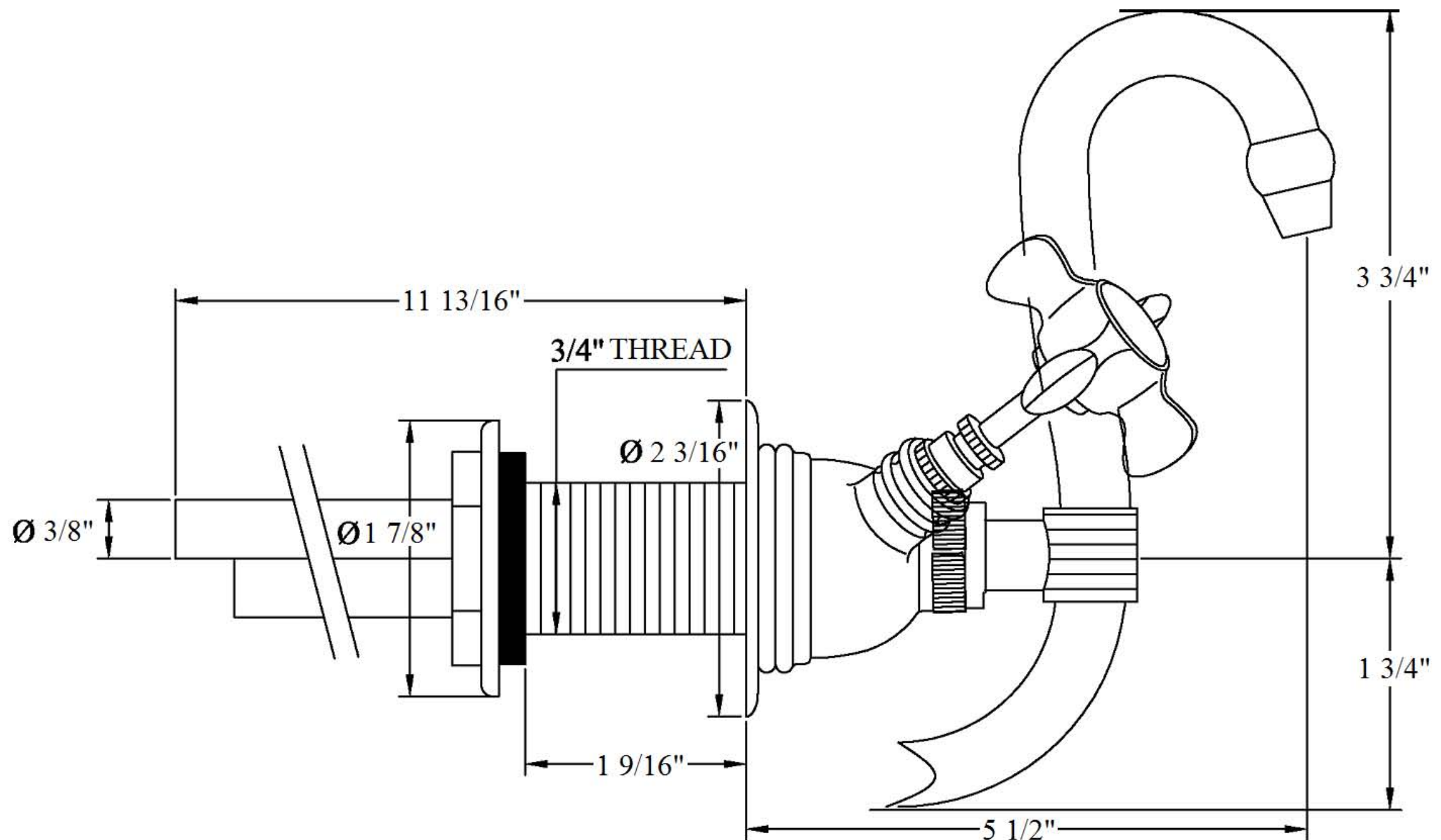
Please follow example when ordering parts for 'Verseuse' Mixer.

- To order part#09 – **Cross Handle**
  - 950137xx
- Please substitute finish number needed in place of **xx**.



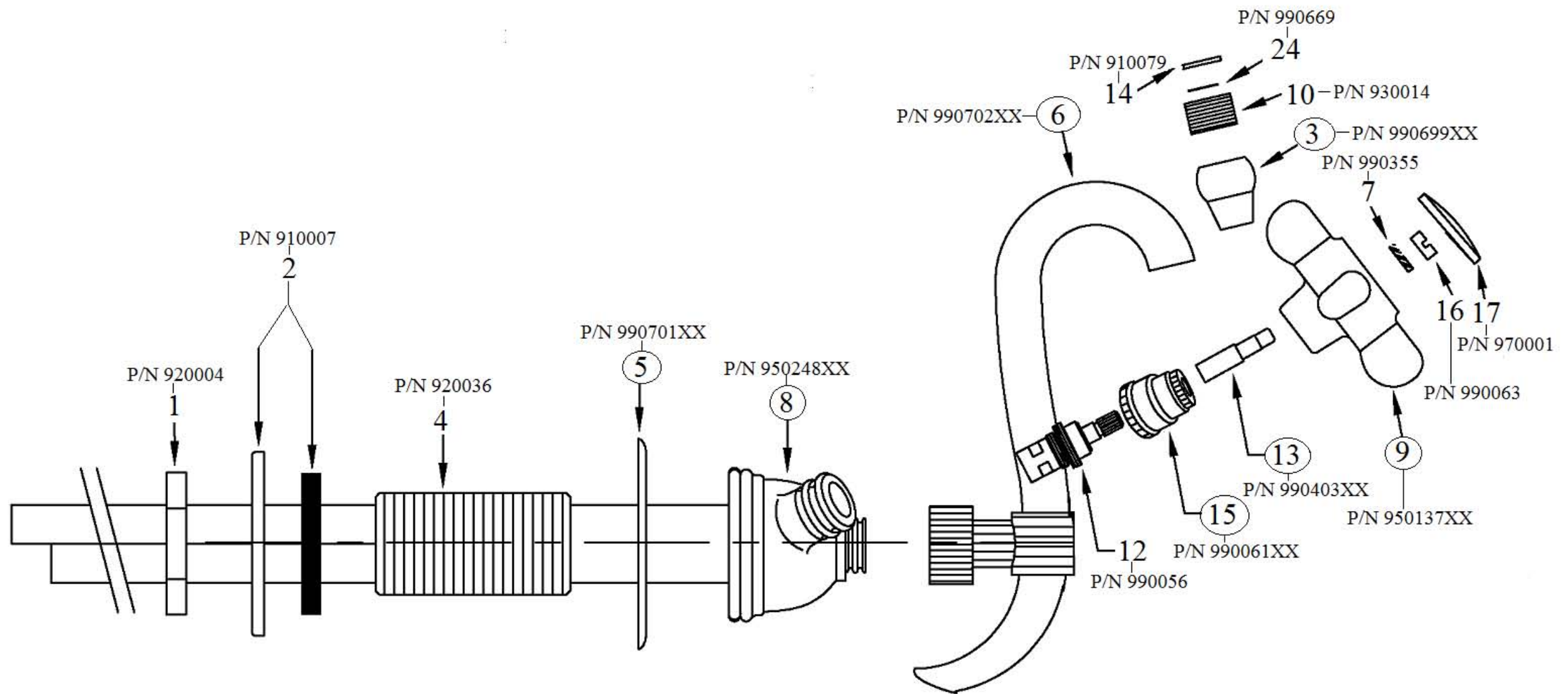
Herbeau®  
L'Art du Sanitaire depuis 1857

# 3055 - 'Royale Verseuse' Wall Mounted Mixer



# 3055 - 'Royale Verseuse' Wall Mounted Mixer

\*P/N = PART NUMBER



○ = FINISHED PARTS

XX = TWO DIGIT FINISH CODE