



PERCY®

PRESSURE BALANCE SHOWER VALVE TRIM



- Contemporary design with industrial elegance
- Cast brass valve with built-in check stops
- Ceramic disc valve cartridge
- Adjustable hot limit safety stop
- Double ceramic pressure balance cartridge: combination of ceramic disc mixing valve and a ceramic balancing spool in a one-piece cartridge
- Includes one-piece cartridge for easier installation and maintenance.
- For use with Flash Shower Rough-In Valves
- Concealed mounting hardware
- 1/2" NPT

CODES AND STANDARDS

Meets or Exceeds ASME A112.18.1/CSA B25.1 and ASSE 1016/ASME A112.1016/CSA B125.16

DESCRIPTION

Pressure Balance Shower Valve Trim
 — Lever Handle (ADA only)
 — Cross Handle

PRODUCT NUMBER

D35105F00.XXX
 D35105F40.XXX

REQUIRED COMPONENTS

Flash Shower Rough-in Valve

D35101SS0.191

AVAILABLE FINISHES

Polished Chrome
 Brushed Nickel

FINISH CODE

100
 144



Polished Chrome



Brushed Nickel

ROUGH-IN DIAGRAM
 SHOWN ON NEXT PAGE

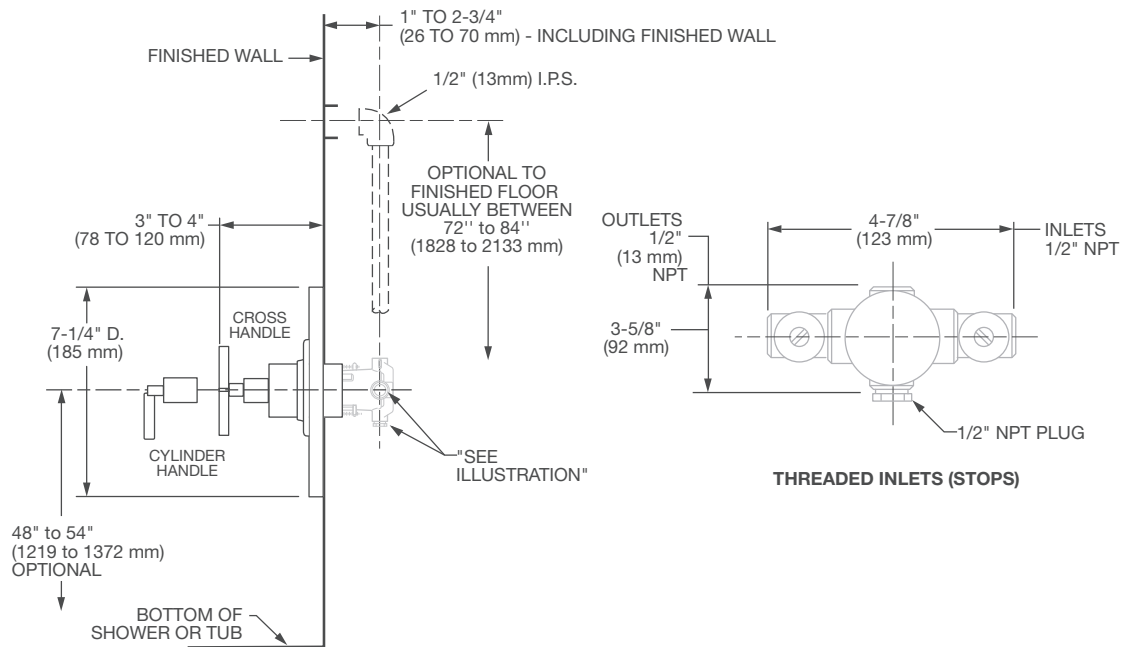


Meets the Americans with Disabilities Act Guidelines and ANSI A117.1 Requirements for the physically challenged.



PERCY®

PRESSURE BALANCE SHOWER VALVE TRIM



IMPORTANT: These measurements are subject to change or cancellation. No responsibility is assumed for use of superseded or voided pages.

PART OF LIXIL