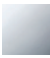

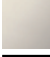


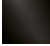


Tissue holder without cover

83 500 361



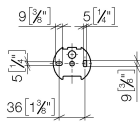
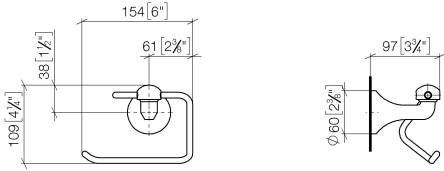
- width 145mm
- height 120 mm
- 95 mm projection

	Chrome	83 500 361-00
	Brushed Platinum	83 500 361-06
	Platinum	83 500 361-08
	Durabronze (23kt Gold)	83 500 361-09
	Brushed Durabronze (23kt Gold)	83 500 361-28
	Brushed Dark Platinum	83 500 361-99

Tissue holder without cover

83 500 361

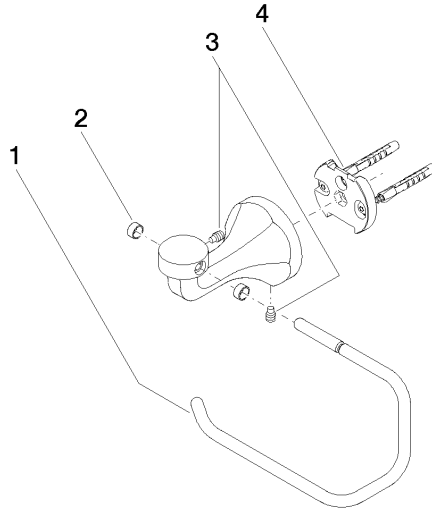
mm [inches]



Tissue holder without cover

83 500 361

Parts for other
finishes can be found
here: Brushed
Platinum



Spare parts list

No.	Item Number	Name	Quantity used	Delivery time
1	08 18 70 501-00	bow	1	10
2	08 18 40 505 90	sleeve	2	2
3	04 31 11 140 00 90	pin	2	2
4	05 17 97 507 00 90	fixing set	1	2