

Wall-mounted single-lever basin mixer without pop-up waste

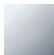


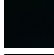

36 860 845



- 170 mm projection
- fixed spout
- circular, air-enriched flow
- hole diameter spout 37 mm
- hole diameter single-lever mixer 57 mm
- rosette 78 x 78 mm
- max. flow 5.7 l/min
- lead-free

Codes & standards

- NSF/ANSI 372

| | | |
|---|------------------|---------------|
|  | Chrome | 36 860 845-00 |
|  | Brushed Platinum | 36 860 845-06 |
|  | Dark Chrome | 36 860 845-19 |
|  | Matte Black | 36 860 845-33 |
|  | Brushed Chrome | 36 860 845-93 |

Required miscellaneous



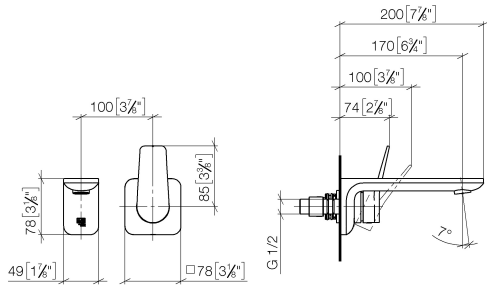
Concealed wall-mounted single-lever mixer 35 860 970-90
0010

- min. recess depth 80 mm
- Rough can be rotated to position the lever on top or to the left of the spout.
- max. recess depth 95 mm

Wall-mounted single-lever basin mixer without pop-up waste

36 860 845

mm [inches]



Flow rate chart



Codes & Standards

ADA

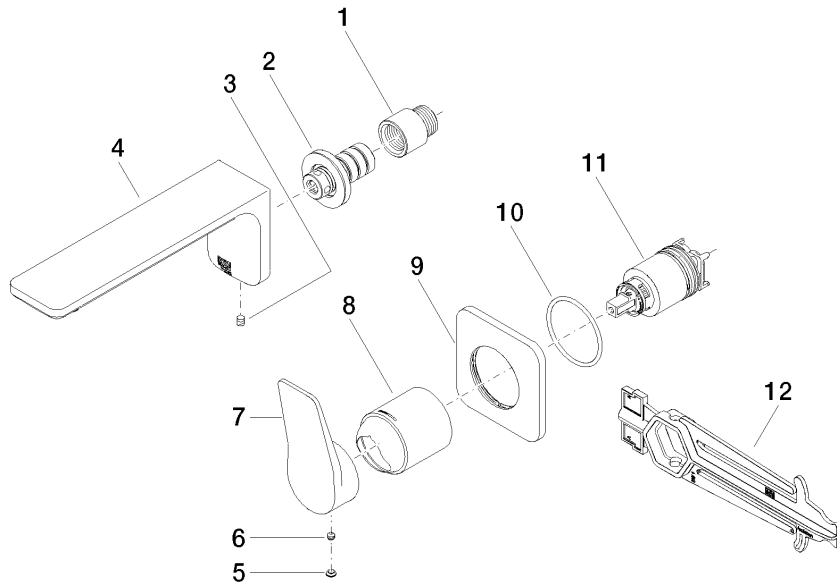
ASME
A112.18.1/CSA
B125.1

NSF/ANSI 372

NSF/ANSI/CAN
61

Wall-mounted single-lever basin mixer without pop-up waste

36 860 845



Spare parts list

| No. | Item Number | Name | Quantity used | Delivery time |
|-----|--------------------|------------|---------------|---------------|
| 1 | 09 24 03 072 10 90 | nipple | 1 | 2 |
| 2 | 90 24 03 108 00 90 | nipple set | 1 | 2 |
| 3 | 04 31 11 004 00 90 | pin | 1 | 2 |
| 4 | 90 11 84 021 00-00 | spout | 1 | 10 |
| 5 | 90 31 20 087 00-00 | plug | 1 | 10 |
| 6 | 09 31 11 063 90 | pin | 1 | 2 |
| 7 | 09 20 84 021-00 | handle | 1 | 10 |
| 8 | 09 11 02 288-00 | cover | 1 | 10 |
| 9 | 09 27 84 020-00 | rosette | 1 | 10 |
| 10 | 09 14 10 049 90 | seal | 1 | 2 |
| 11 | 90 15 05 064 01 90 | cartridge | 1 | 2 |
| 12 | 09 30 09 064 90 | key | 1 | 2 |