

Wall-mounted sink mixer with extending spout

36 819 892



- 325-495 mm projection
- pivoting spout
- laminar flow
- rosette Ø 55 mm
- max. flow 5.7 l/min at 3 bar flow pressure
- lead-free

Codes & standards

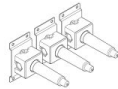
- NSF/ANSI 372
- This product can help a building to meet requirements of Green Building Rating Systems, e.g. LEED®, BREEAM®, DGNB, WELL

Required miscellaneous



- | | |
|-------------------------------------|---------------|
| Concealed wall-mounted mixer | 35 700 970-90 |
| Centred spout | 0010 |
| • min. recess depth 70 mm | |
| • max. recess depth 135 mm | |

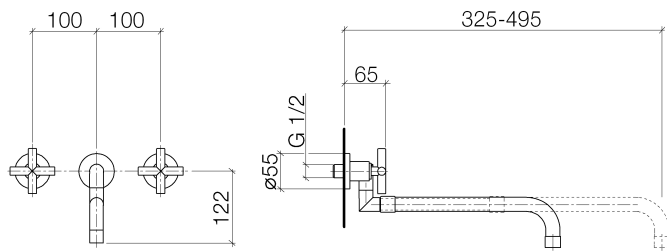
Required miscellaneous



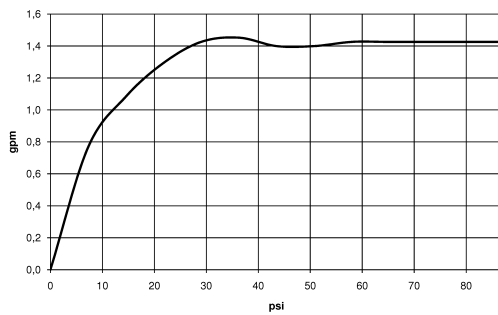
- | | |
|-------------------------------------|---------------|
| Concealed wall-mounted mixer | 35 720 970-90 |
| variable positioning | 0010 |
| • min. recess depth 85 mm | |
| • max. recess depth 145 mm | |

Wall-mounted sink mixer with extending spout

36 819 892



Flow rate chart



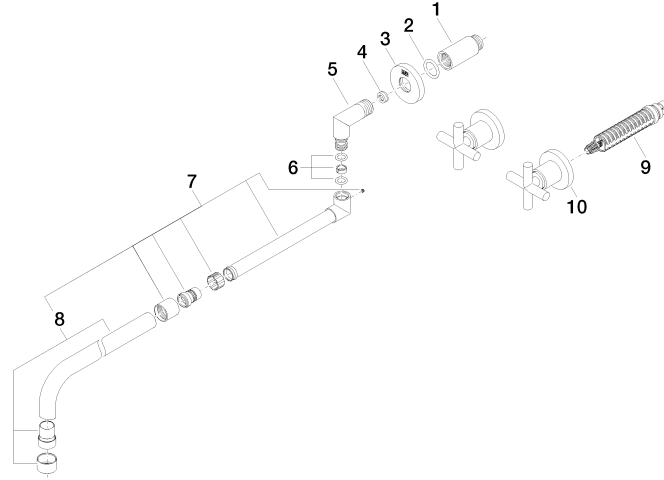
Codes & Standards

ADA

NSF/ANSI 372

Wall-mounted sink mixer with extending spout

36 819 892



Spare parts list

No.	Item Number	Name	Quantity used	Delivery time
1	09 24 03 081 10 90	extension	1	2
2	09 14 10 026 90	seal	1	2
3	09 27 22 504-00	rosette	1	10
4	09 23 01 087 90	flow reducer	1	2
5	09 11 03 013 10-00	connection	1	10
6	90 14 15 020 00 90	gasket kit	1	2
7	04 28 25 077 10-00	spout	1	10
8	90 28 25 076 00-00	spout	1	10
9	90 90 03 157 00 90	top	2	2
13	36 310 892-00	connection	2	10