

Concealed thermostat with two function volume control

36 426 970



- rotary diverter with volume control and shut-off function
- cover plate Ø 150 mm
- temperature control handle with safety limit stop at 38°C
- hot water temperature limiter, can be preset

Codes & standards

	Chrome	36 426 970-00 0010
	Brushed Platinum	36 426 970-06 0010
	Platinum	36 426 970-08 0010
	Matte White	36 426 970-10 0010
	Dark Chrome	36 426 970-19 0010
	Brushed Durabronze (23kt Gold)	36 426 970-28 0010
	Matte Black	36 426 970-33 0010
	Brushed Champagne (22kt Gold)	36 426 970-46 0010
	Champagne (22kt Gold)	36 426 970-47 0010
	Brushed Chrome	36 426 970-93 0010
	Brushed Dark Platinum	36 426 970-99 0010

Required miscellaneous



Concealed thermostat with built-in isolators 35 426 970-90 0010

- min. recess depth 80 mm
- max. recess depth 136 mm

Required miscellaneous



xGRID Installation track 555 mm 12 360 970 90

Recommended miscellaneous

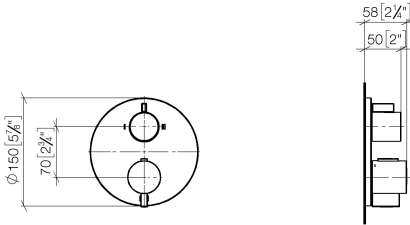


xGRID Attachment set for integrating in the dry wall construction 12 340 970 90

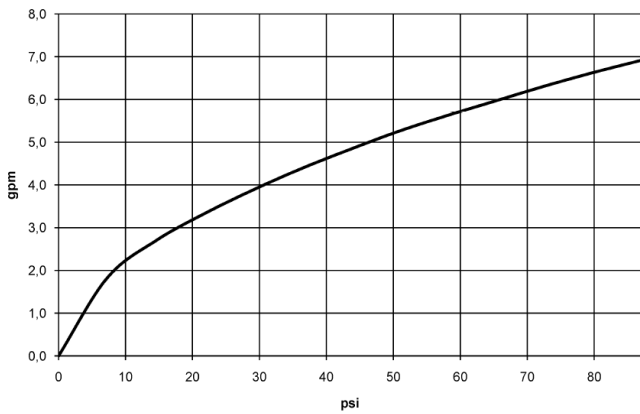
Concealed thermostat with two function volume control

36 426 970

mm [inches]



Flow rate chart



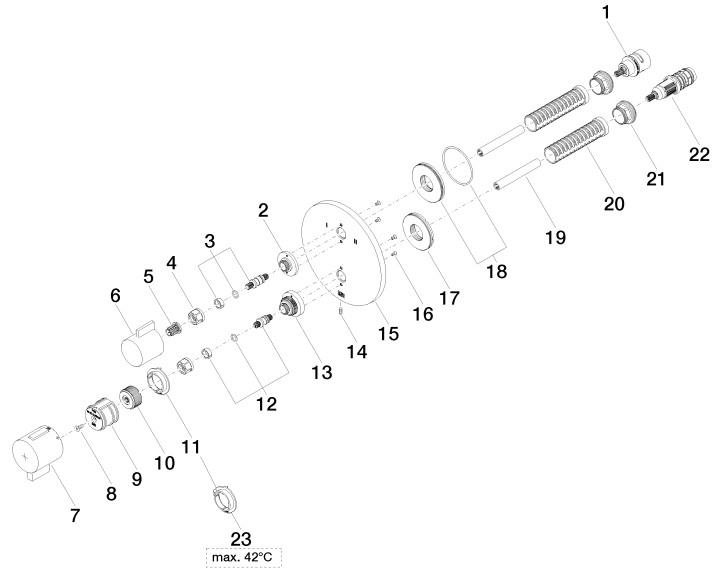
Codes & Standards

ADA

ASME
A112.18.1/CSA
B125.1

Concealed thermostat with two function volume control

36 426 970





Concealed thermostat with two function volume control

36 426 970

Spare parts list

No.	Item Number	Name	Quantity used	Delivery time
1	90 90 03 163 00 90	diverter	1	2
2	09 12 12 053-00	base	1	10
3	04 29 06 111 00-00	spindle	1	60
4	09 23 30 023 90	nut	2	2
5	90 12 12 002 00 90	fixing cap	1	2
6	09 20 67 006-00	handle	1	10
7	90 17 33 019 00-00	handle	1	10
8	09 30 30 124 90	screw	1	2
9	09 12 12 052 90	base	1	2
10	09 12 12 054 90	base	1	2
11	09 28 10 190 90	regulator	1	2
12	04 29 06 024 00-00	spindle	1	60
13	09 12 12 051-00	base	1	10
14	09 31 11 134 90	pin	1	2
15	09 11 02 266-00	plate	1	10
16	09 30 30 157 90	screw	4	2
17	09 30 01 296 90	disc	1	2
18	90 30 01 190 00 90	disc	1	2
19	09 23 01 124 90	sleeve	2	2
20	09 18 40 077 90	sleeve	2	2
21	09 24 04 257 90	nut	2	2
22	90 15 02 013 00 90	cartridge	1	2
23	09 28 10 189 90	regulator	1	2