

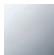

Concealed thermostat with one function volume control

36 425 710



- cover plate 150 x 90 mm
- temperature control handle with safety limit stop at 38°C
- hot water temperature limiter, can be preset

Codes & standards

	Chrome	36 425 710-00 0010
	Brushed Platinum	36 425 710-06 0010

Required miscellaneous



Concealed thermostat with built-in isolators 35 426 970-90 0010

- min. recess depth 80 mm
- max. recess depth 136 mm

Recommended miscellaneous



xGRID Attachment set for integrating in the dry wall construction

12 340 970 90

Required miscellaneous



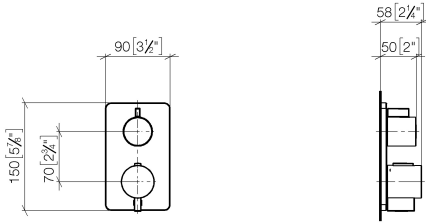
xGRID Installation track 555 mm 12 360 970 90



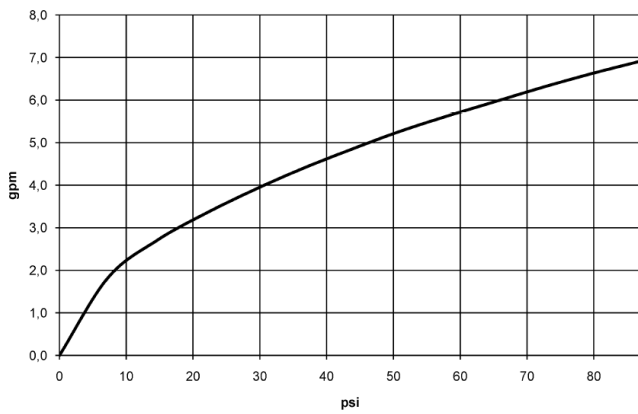
Concealed thermostat with one function volume control

36 425 710

mm [inches]



Flow rate chart



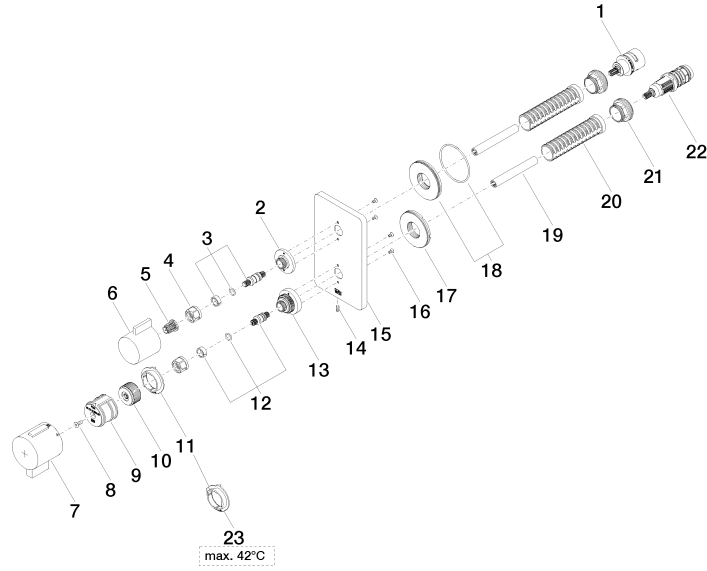
Codes & Standards

ADA

ASME
A112.18.1/CSA
B125.1

Concealed thermostat with one function volume control

36 425 710





Concealed thermostat with one function volume control

36 425 710

Spare parts list

No.	Item Number	Name	Quantity used	Delivery time
1	90 90 03 166 00 90	top	1	2
2	09 12 12 053-00	base	1	10
3	04 29 06 111 00-00	spindle	1	60
4	09 23 30 023 90	nut	2	2
5	90 12 12 002 00 90	fixing cap	1	2
6	09 20 67 006-00	handle	1	10
7	90 17 33 019 00-00	handle	1	10
8	09 30 30 124 90	screw	1	2
9	09 12 12 052 90	base	1	2
10	09 12 12 054 90	base	1	2
11	09 28 10 190 90	regulator	1	2
12	04 29 06 024 00-00	spindle	1	60
13	09 12 12 051-00	base	1	10
14	09 31 11 134 90	pin	1	2
15	09 11 02 246-00	plate	1	10
16	09 30 30 157 90	screw	4	2
17	09 30 01 296 90	disc	1	2
18	90 30 01 190 00 90	disc	1	2
19	09 23 01 124 90	sleeve	2	2
20	09 18 40 077 90	sleeve	2	2
21	09 24 04 257 90	nut	2	2
22	90 15 02 013 00 90	cartridge	1	2
23	09 28 10 189 90	regulator	1	2