

## Single-lever mixer Pull-down with spray function

33 870 875



- 240 mm projection
- pivotable spout 360°
- laminar and spray flow
- height of mixer 500 mm
- height up to laminar flow regulator 240 mm
- hole diameter 35 mm
- 2 x pressure hose with 3/8" cap nut
- 1800 mm metal shower hose
- sprayface with anti-scaling system
- max. flow 5.7 l/min at 3 bar flow pressure
- lead-free

### Codes & standards

- NSF/ANSI 372
- This product can help a building to meet requirements of Green Building Rating Systems, e.g. LEED®, BREEAM®, DGNB, WELL

Intrinsic protection against back flow.

Push button locks into spray mode when pressed. To switch back to laminar flow the water must be turned off.

|  |                               |                    |
|--|-------------------------------|--------------------|
|  | Chrome                        | 33 870 875-00 0010 |
|  | Brushed Platinum              | 33 870 875-06 0010 |
|  | Platinum                      | 33 870 875-08 0010 |
|  | Durabrace (23kt Gold)         | 33 870 875-09 0010 |
|  | Dark Chrome                   | 33 870 875-19 0010 |
|  | Brushed Durabrace (23kt Gold) | 33 870 875-28 0010 |
|  | Matte Black                   | 33 870 875-33 0010 |
|  | Brushed Champagne (22kt Gold) | 33 870 875-46 0010 |
|  | Champagne (22kt Gold)         | 33 870 875-47 0010 |
|  | Brushed Chrome                | 33 870 875-93 0010 |
|  | Brushed Dark Platinum         | 33 870 875-99 0010 |

### Recommended miscellaneous

|  |                              |               |
|--|------------------------------|---------------|
|  | <b>Swivel limitation set</b> | 12 823 970 90 |
|--|------------------------------|---------------|

### Recommended miscellaneous

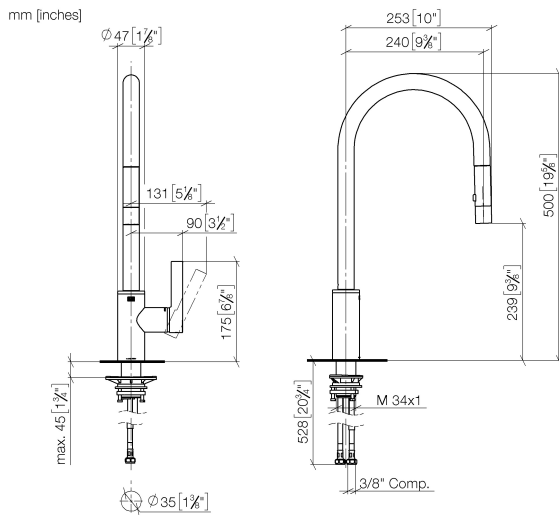
|  |                                  |               |
|--|----------------------------------|---------------|
|  | <b>AIR SWITCH Control button</b> | 10 713 970-00 |
|--|----------------------------------|---------------|

### Recommended miscellaneous

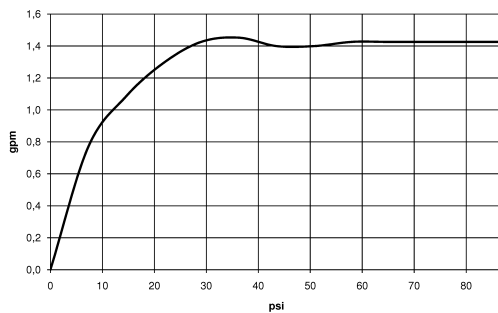
|  |                                  |               |
|--|----------------------------------|---------------|
|  | <b>Dispenser without rosette</b> | 82 424 970-00 |
|--|----------------------------------|---------------|

**Single-lever mixer Pull-down with spray function**

33 870 875



**Flow rate chart**



**Codes & Standards**

ADA

ASME  
A112.18.1/CSA  
B125.1

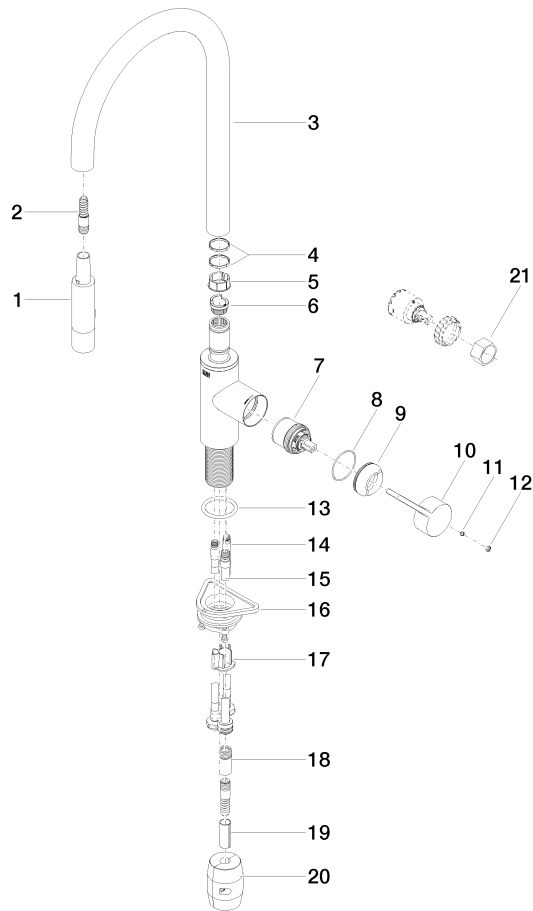
California Energy  
Commission  
(CEC)

NSF/ANSI 372

NSF/ANSI/CAN  
61

**Single-lever mixer Pull-down with spray function**

33 870 875



**Spare parts list**

| No. | Item Number        | Name        | Quantity used | Delivery time |
|-----|--------------------|-------------|---------------|---------------|
| 1   | 04 12 11 148 00-00 | shower      | 1             | 10            |
| 2   | 04 30 02 120 00-00 | hose        | 1             | 10            |
| 3   | 90 28 22 304 00-00 | spout       | 1             | 10            |
| 4   | 09 28 10 160 90    | ring        | 2             | 2             |
| 5   | 09 18 40 186 90    | sleeve      | 1             | 2             |
| 6   | 09 30 11 203 90    | ring        | 1             | 2             |
| 7   | 90 15 05 064 02 90 | cartridge   | 1             | 2             |
| 8   | 09 14 10 190 90    | seal        | 1             | 2             |
| 9   | 09 28 30 030-00    | cover       | 1             | 10            |
| 10  | 09 20 87 020-00    | handle      | 1             | 10            |
| 11  | 09 31 11 063 90    | pin         | 1             | 2             |
| 12  | 90 31 20 087 00-00 | plug        | 1             | 10            |
| 13  | 09 14 10 036 90    | seal        | 1             | 2             |
| 14  | 04 30 04 103 00 90 | hose        | 2             | 2             |
| 15  | 04 28 20 067 00 90 | pipe        | 1             | 2             |
| 16  | 04 30 11 040 00 90 | fixing set  | 1             | 2             |
| 17  | 09 20 93 056 90    | insert      | 1             | 2             |
| 18  | 90 24 03 253 01 90 | adaptor     | 1             | 2             |
| 19  | 09 30 03 038 90    | hose        | 1             | 2             |
| 20  | 04 21 50 010 00 90 | accessories | 1             | 2             |
| 21  | 09 30 09 031 90    | key         | 1             | 60            |