

## Single-lever mixer Pull-out with spray function

33 870 790



- 235 mm projection
- pivotable spout 360°
- laminar and spray flow
- height of mixer 342 mm
- height up to aerator 292 mm
- hole diameter 35 mm
- 2 x pressure hose with 3/8" cap nut
- fabric braided hose 1500 mm
- max. flow 5.7 l/min at 3 bar flow pressure
- lead-free

### Codes & standards

- NSF/ANSI 372
- This product can help a building to meet requirements of Green Building Rating Systems, e.g. LEED®, BREEAM®, DGNB, WELL

Intrinsic protection against back flow.

Push button locks into spray mode when pressed. To switch back to aerator mode the water must be turned off.

|   |                                |                    |
|---|--------------------------------|--------------------|
|  | Chrome                         | 33 870 790-00 0010 |
|  | Brushed Platinum               | 33 870 790-06 0010 |
|  | Platinum                       | 33 870 790-08 0010 |
|  | Dark Chrome                    | 33 870 790-19 0010 |
|  | Brushed Durabronze (23kt Gold) | 33 870 790-28 0010 |
|  | Brushed Champagne (22kt Gold)  | 33 870 790-46 0010 |
|  | Champagne (22kt Gold)          | 33 870 790-47 0010 |
|  | Brushed Chrome                 | 33 870 790-93 0010 |
|  | Brushed Dark Platinum          | 33 870 790-99 0010 |

### Recommended miscellaneous

**AIR SWITCH Control button**

10 713 970-00



### Recommended miscellaneous

**Dispenser without rosette**

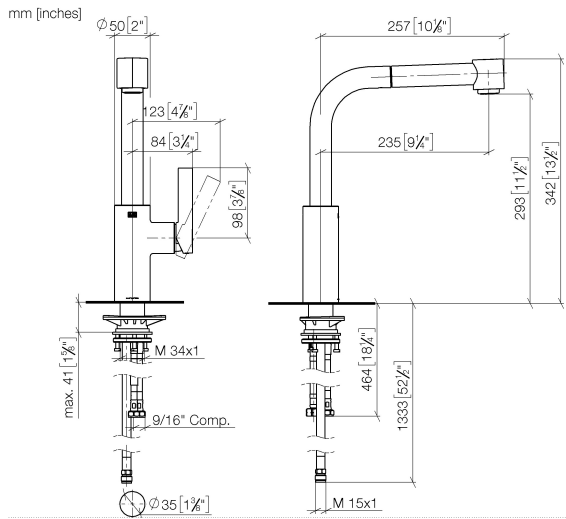
82 424 970-00



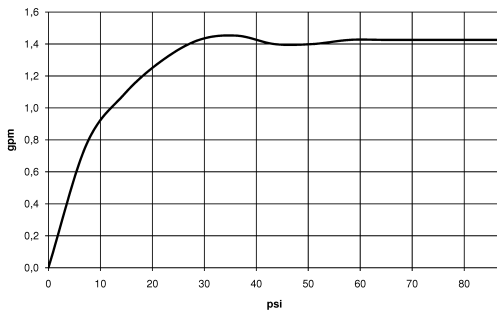


# Single-lever mixer Pull-out with spray function

33 870 790



## Flow rate chart



## Codes & Standards

ADA

ASME  
A112.18.1/CSA  
B125.1

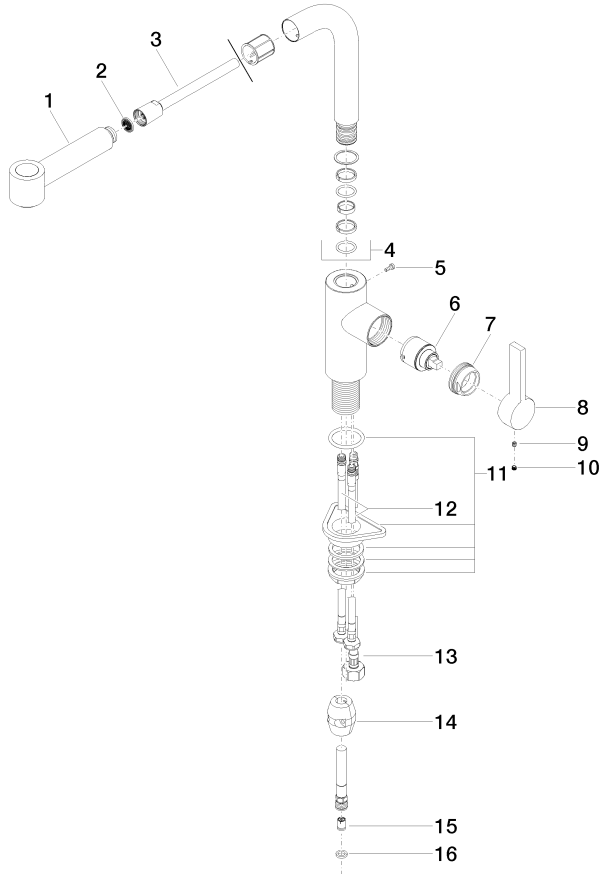
California Energy  
Commission  
(CEC)

NSF/ANSI 372

NSF/ANSI/CAN  
61

**Single-lever mixer Pull-out with spray function**

33 870 790



**Spare parts list**

| No. | Item Number        | Name                | Quantity used | Delivery time |
|-----|--------------------|---------------------|---------------|---------------|
| 1   | 04 12 11 102 00-00 | shower              | 1             | 10            |
| 2   | 09 23 01 039 90    | sieve               | 1             | 2             |
| 3   | 04 30 02 059 00-00 | hose                | 1             | 10            |
| 4   | 90 28 22 186 00-00 | spout               | 1             | 10            |
| 5   | 09 30 30 054 90    | screw               | 1             | 2             |
| 6   | 90 15 05 034 00 90 | cartridge           | 1             | 40            |
| 7   | 09 24 04 141-00    | nut                 | 1             | 10            |
| 8   | 09 20 79 040-00    | handle              | 1             | 10            |
| 9   | 09 31 11 030 90    | pin                 | 1             | 2             |
| 10  | 09 31 20 109 90    | plug                | 1             | 2             |
| 11  | 04 23 10 044 02 90 | fixing set          | 1             | 2             |
| 12  | 04 30 04 106 00 90 | hose                | 2             | 2             |
| 13  | 04 30 04 029 00 90 | hose                | 1             | 2             |
| 14  | 04 21 50 005 00 90 | accessories         | 1             | 2             |
| 15  | 09 23 01 096 90    | back-flow preventer | 1             | 2             |
| 16  | 09 14 20 019 90    | seal                | 1             | 2             |