

## Single-lever mixer Pull-out

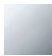

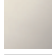


33 840 760



- 220 mm projection
- pivotable spout 130°
- air-enriched flow
- height of mixer 167 mm
- height up to aerator 145 mm
- hole diameter 35 mm
- 2 x pressure hose with 3/8" cap nut
- fabric braided hose 1500 mm
- max. flow 5.7 l/min at 3 bar flow pressure
- lead-free

### Codes & standards

- NSF/ANSI 372

	Chrome	33 840 760-00 0010
	Brushed Platinum	33 840 760-06 0010
	Platinum	33 840 760-08 0010
	Brushed Durabronze (23kt Gold)	33 840 760-28 0010
	Brushed Chrome	33 840 760-93 0010
	Brushed Dark Platinum	33 840 760-99 0010

Intrinsic protection against back flow.

Not possible in combination with rinsing spray.

### Recommended miscellaneous

**AIR SWITCH Control button**

10 713 970-00



### Recommended miscellaneous

**Dispenser without rosette**

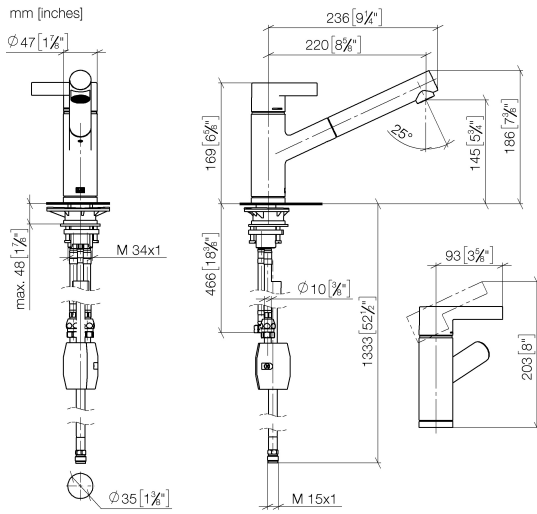
82 424 970-00



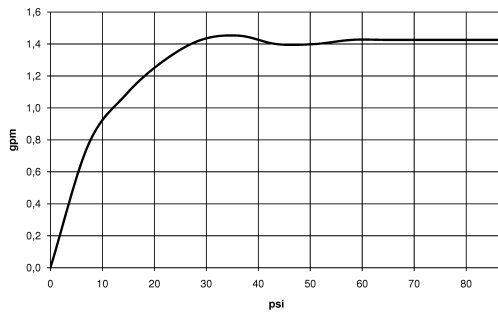


## Single-lever mixer Pull-out

33 840 760



### Flow rate chart



### Codes & Standards

ADA

ASME  
A112.18.1/CSA  
B125.1

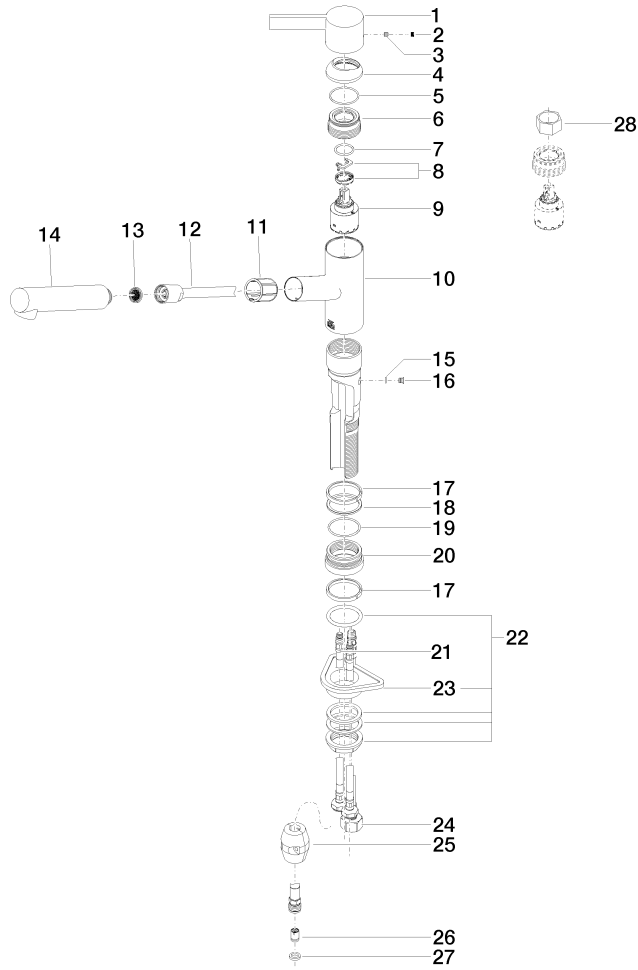
California Energy  
Commission  
(CEC)

NSF/ANSI 372

NSF/ANSI/CAN  
61

**Single-lever mixer Pull-out**

33 840 760





## Single-lever mixer Pull-out

33 840 760

### Spare parts list

No.	Item Number	Name	Quantity used	Delivery time
1	09 20 76 001-00	handle	1	10
2	09 31 20 109 90	plug	1	2
3	09 31 11 030 90	pin	1	2
4	09 28 30 012-00	cover	1	10
5	09 14 10 102 90	seal	1	2
6	09 24 04 270 90	nut	1	2
7	09 14 10 031 90	seal	1	2
8	04 28 10 148 00 90	accessories	1	2
9	90 15 05 064 00 90	cartridge	1	2
10	09 19 76 009-00	sleeve	1	10
11	09 18 40 099 90	sleeve	1	2
12	04 30 02 059 00-00	hose	1	10
13	09 23 01 039 90	sieve	1	2
14	04 12 11 106 00-00	shower	1	10
15	09 14 10 001 90	seal	1	2
16	09 30 30 113 20 90	screw	1	2
17	09 14 15 029 90	ring	2	2
18	09 28 10 144 90	ring	1	2
19	09 14 10 034 90	seal	1	2
20	09 27 76 001-00	rosette	1	10
21	04 30 04 102 00 90	High pressure hose 3/8"	2	2
22	04 23 10 044 02 90	fixing set	1	2
23	09 18 40 090 90	sleeve	1	2
24	04 30 04 029 00 90	hose	1	2
25	04 21 50 005 00 90	accessories	1	2
26	09 23 01 096 90	back-flow preventer	1	2
27	09 14 20 019 90	seal	1	2
31	09 30 09 031 90	key	1	60