

## Single-lever mixer for rinsing/Profi spray

33 826 790

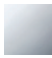

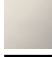





- 234 mm projection
- pivotable spout 360°
- spout, end-piece with 20° rotation
- air-enriched flow
- height of mixer 337 mm
- height up to aerator 297 mm
- single-lever mixer hole diameter 35mm
- 2x US pressure hose, 3/8"
- max. flow 5.7 l/min at 3 bar flow pressure
- lead-free

### Codes & standards

- NSF/ANSI 372
  - This product can help a building to meet requirements of Green Building Rating Systems, e.g. LEED®, BREEAM®, DGNB, WELL
- Single-lever mixer for combining with rinsing/Profi spray only**

Single-lever mixer for combining with rinsing/Profi spray only

	Chrome	33 826 790-00 0010
	Brushed Platinum	33 826 790-06 0010
	Platinum	33 826 790-08 0010
	Brushed Durabronze (23kt Gold)	33 826 790-28 0010
	Brushed Chrome	33 826 790-93 0010
	Brushed Dark Platinum	33 826 790-99 0010

### Required miscellaneous



**Profi spray set**

27 789 970-00  
0010

### Required miscellaneous



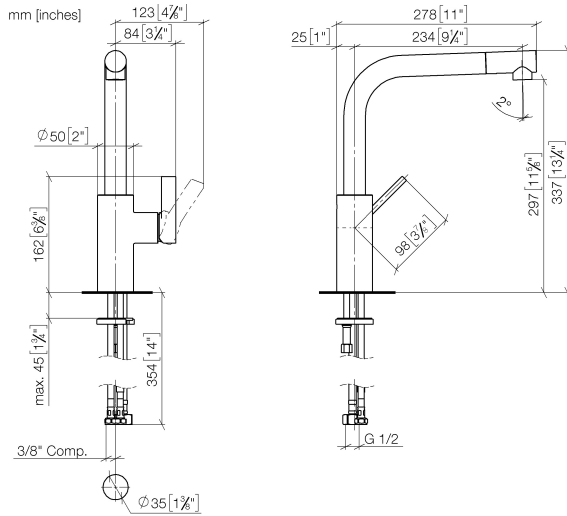
**Rinsing spray set**

27 721 970-00

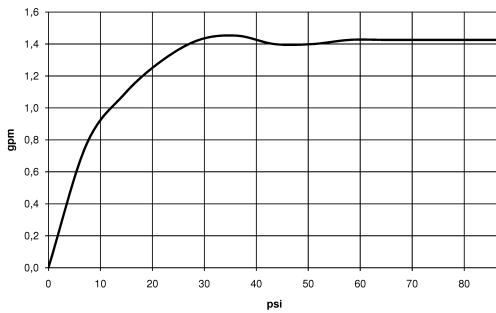


## Single-lever mixer for rinsing/Profi spray

33 826 790



### Flow rate chart



### Codes & Standards

ADA

ASME  
A112.18.1/CSA  
B125.1

California Energy  
Commission  
(CEC)

NSF/ANSI 372

NSF/ANSI/CAN  
61

# Single-lever mixer for rinsing/Profi spray

33 826 790

