

Single-lever mixer

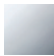

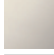


33 810 625



- 235 mm projection
- pivotable spout 360°
- air-enriched flow
- height of mixer 365 mm
- height up to aerator 279 mm
- hole diameter 35 mm
- 2 x pressure hose with 3/8" cap nut
- max. flow 5.7 l/min at 3 bar flow pressure
- lead-free

Codes & standards

- NSF/ANSI 372

	Chrome	33 810 625-00 0010
	Brushed Platinum	33 810 625-06 0010
	Platinum	33 810 625-08 0010
	Brushed Durabronze (23kt Gold)	33 810 625-28 0010
	Brushed Dark Platinum	33 810 625-99 0010

Not possible in combination with rinsing spray.

Recommended miscellaneous

AIR SWITCH Control button 10 713 970-00



Recommended miscellaneous

Dispenser with rosette 82 434 970-00



Recommended miscellaneous

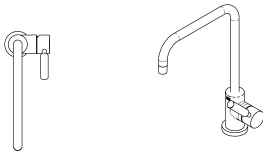
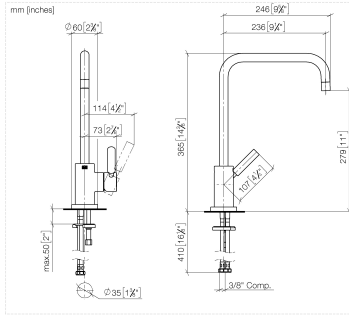
Dispenser with rosette 82 444 970-00



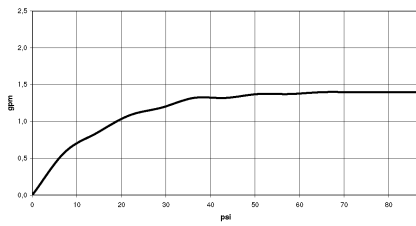


Single-lever mixer

33 810 625



Flow rate chart



Codes & Standards

ADA

ASME
A112.18.1/CSA
B125.1

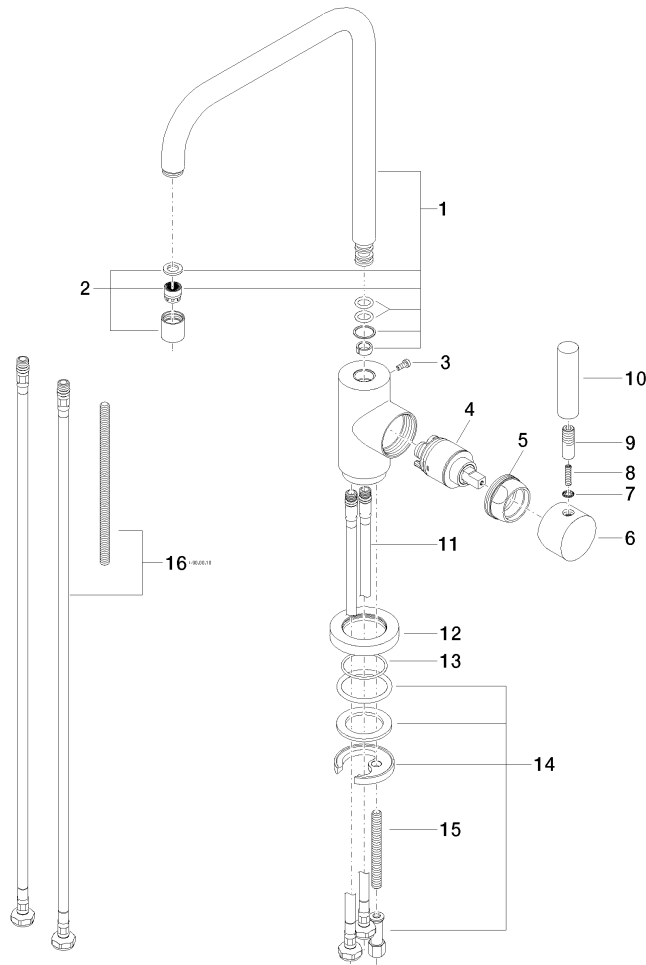
California Energy
Commission
(CEC)

NSF/ANSI 372

NSF/ANSI/CAN
61

Single-lever mixer

33 810 625



Spare parts list

No.	Item Number	Name	Quantity used	Delivery time
1	90 28 22 209 02-00	spout	1	10
2	90 23 01 028 00-00	aerator	1	10
3	09 30 30 054 90	screw	1	2
4	90 15 05 030 00 90	cartridge	1	2
5	09 24 04 107-00	nut	1	10
6	90 20 88 040 00-00	handle	1	10
7	09 30 11 032 90	disc	1	2
8	09 31 11 010 90	pin	1	2
9	09 24 04 048-00	nipple	1	10
10	11 170 880-00	handle	1	10
11	04 30 04 106 00 90	hose	2	2
12	09 28 10 055-00	rosette	1	10
13	09 14 10 034 90	seal	1	2
14	04 30 11 038 00 90	fixing set	1	2
15	09 31 11 011 90	pin	1	2
16	12 803 970-90 0010	Extension set	1	60