

BAR TAP Two-hole mixer with individual rosettes

32 805 680



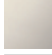

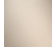




- 165 mm projection
- pivotable spout 360°
- air-enriched flow
- height of mixer 230 mm
- height up to laminar flow regulator 205 mm
- individual rosette 55 x 55 mm
- hole diameter spout 35 mm
- single-lever mixer hole diameter 44 mm
- 2 x pressure hose with 3/8" cap nut
- max. flow 5.7 l/min at 3 bar flow pressure
- lead-free

Codes & standards

- NSF/ANSI 372
- This product can help a building to meet requirements of Green Building Rating Systems, e.g. LEED®, BREEAM®, DGNB, WELL

Operating unit can be positioned freely.

| | | |
|---|--------------------------------|--------------------|
|  | Chrome | 32 805 680-00 0010 |
|  | Brushed Platinum | 32 805 680-06 0010 |
|  | Platinum | 32 805 680-08 0010 |
|  | Brushed Durabronze (23kt Gold) | 32 805 680-28 0010 |
|  | Brushed Champagne (22kt Gold) | 32 805 680-46 0010 |
|  | Champagne (22kt Gold) | 32 805 680-47 0010 |
|  | Brushed Dark Platinum | 32 805 680-99 0010 |

Recommended miscellaneous

AIR SWITCH Control button 10 714 970-00



Recommended miscellaneous

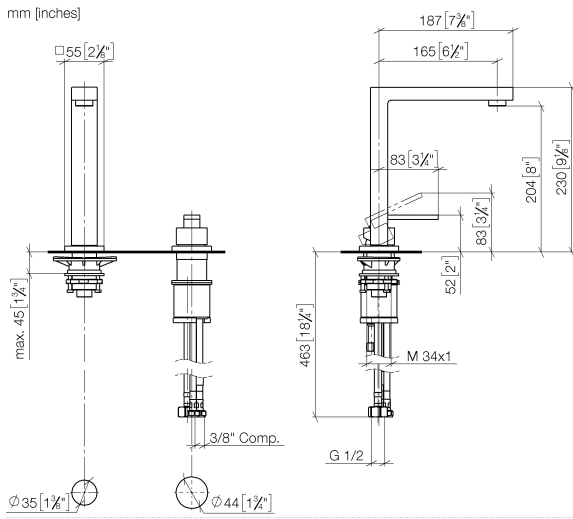
Dispenser with rosette 82 439 970-00



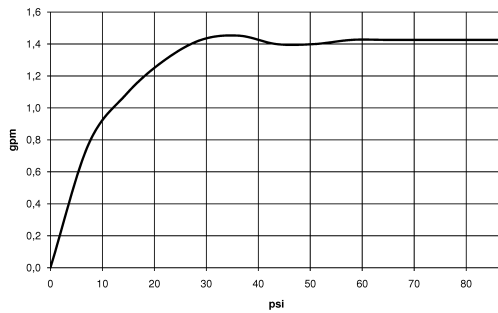


BAR TAP Two-hole mixer with individual rosettes

32 805 680



Flow rate chart



Codes & Standards

ADA

ASME
A112.18.1/CSA
B125.1

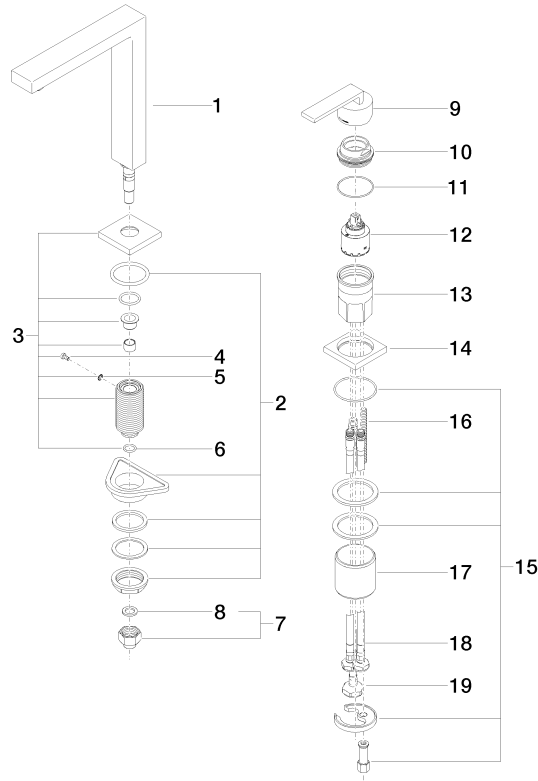
California Energy
Commission
(CEC)

NSF/ANSI 372

NSF/ANSI/CAN
61

BAR TAP Two-hole mixer with individual rosettes

32 805 680



Spare parts list

| No. | Item Number | Name | Quantity used | Delivery time |
|-----|--------------------|------------|---------------|---------------|
| 1 | 90 11 06 192 06-00 | spout | 1 | 10 |
| 2 | 04 23 10 044 01 90 | fixing set | 1 | 2 |
| 3 | 90 27 78 023 00-00 | rosette | 1 | 10 |
| 4 | 09 30 30 057 90 | screw | 1 | 2 |
| 5 | 09 30 11 028 90 | disc | 1 | 2 |
| 6 | 09 14 10 077 90 | seal | 1 | 2 |
| 7 | 04 24 04 166 10 90 | nipple | 1 | 2 |
| 8 | 09 14 20 002 90 | seal | 1 | 60 |
| 9 | 90 20 78 040 00-00 | handle | 1 | 10 |
| 10 | 09 24 04 142-00 | nut | 1 | 10 |
| 11 | 09 14 10 037 90 | seal | 1 | 2 |
| 12 | 90 15 05 034 00 90 | cartridge | 1 | 40 |
| 13 | 09 30 01 100 10 90 | sleeve | 1 | 2 |
| 14 | 09 27 78 007-00 | rosette | 1 | 10 |
| 15 | 04 30 11 038 02 90 | fixing set | 1 | 2 |
| 16 | 09 31 11 011 90 | pin | 1 | 2 |
| 17 | 09 18 40 079 90 | sleeve | 1 | 2 |
| 18 | 04 30 04 106 00 90 | hose | 2 | 2 |
| 19 | 04 30 04 019 00 90 | hose | 1 | 2 |