

Body spray without volume control FlowReduce

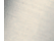
28 518 710



- spray head Ø 55mm
- ball-joint pivotable through 25° (in any direction)
- rain flow
- anti-scale system
- rosette 78 x 55 mm
- 1/2" connection
- max. flow 5 l/min

 Chrome

28 518 710-00

 Brushed Platinum

28 518 710-06

Codes & standards

- This product can help a building to meet requirements of Green Building Rating Systems, e.g. LEED®, BREEAM®, DGNB, WELL

Required miscellaneous

Concealed adapter

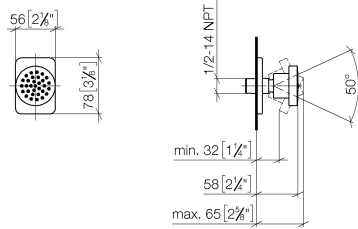
35 080 970-90
0010



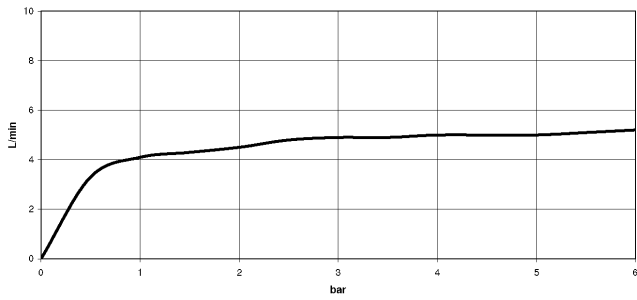
Body spray without volume control FlowReduce

28 518 710

mm [inches]



Flow rate chart

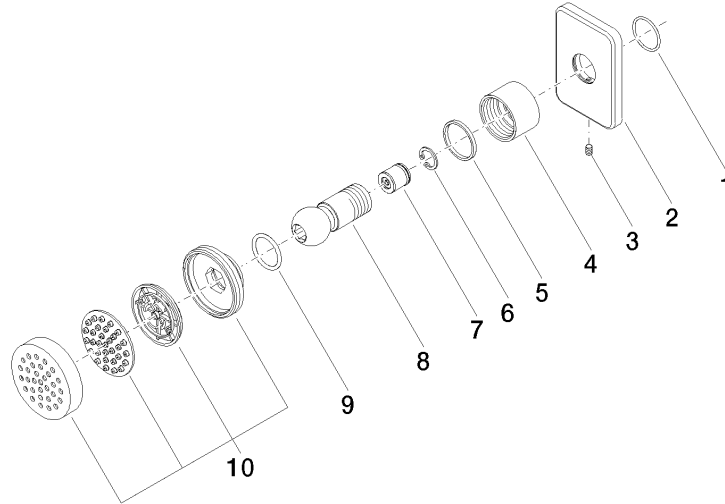


Codes & Standards

ASME	California Energy
A112.18.1/CSA	Commission
B125.1	(CEC)

Body spray without volume control FlowReduce

28 518 710



Spare parts list

No.	Item Number	Name	Quantity used	Delivery time
1	09 14 10 098 90	seal	1	2
2	09 27 71 004-00	rosette	1	10
3	09 31 11 048 90	pin	1	2
4	09 23 30 026-00	nut	1	10
5	09 14 15 010 90	ring	1	2
6	09 16 01 014 90	ring	1	2
7	09 23 01 048 90	back-flow preventer	1	2
8	09 21 40 016-00	connection	1	10
9	09 14 10 015 90	seal	1	2
10	90 12 05 027 00-00	casing (completely)	1	10