

## Shower head FlowReduce

---

28 508 710



- 200 mm projection
- ball-joint pivotable through 30°
- three settings: normal flow, soft flow, massage flow
- with anti-scale system
- spray head Ø 92mm
- rosette 78 x 55 mm
- 1/2" connection
- max. flow 6.8 l/min



Chrome

28 508 710-00 0010



Brushed Platinum

28 508 710-06 0010

### Codes & standards

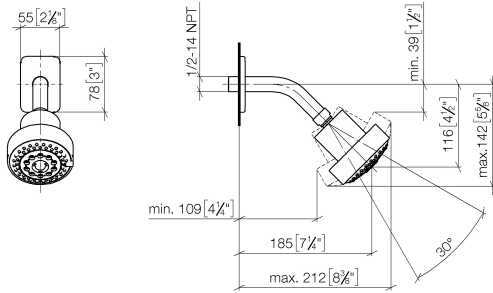
- This product reduces water consumption by % (compared to requirements of EPAAct '92)
- This product can contribute to Water Use Reduction in LEED® Green Building Rating
- This product can help a building to meet requirements of Green Building Rating Systems, e.g. LEED®, BREEAM®, DGNB, WELL



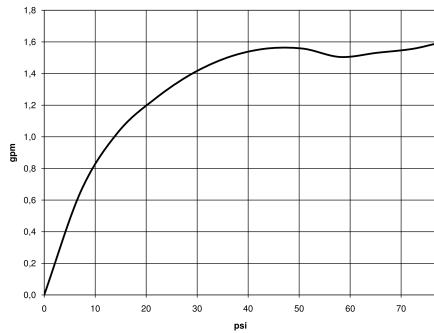
## Shower head FlowReduce

28 508 710

mm [inches]



## Flow rate chart



## Codes & Standards

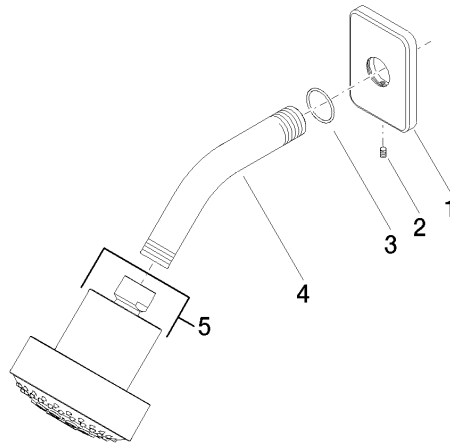
ASME  
A112.18.1/CSA  
B125.1

California Energy  
Commission  
(CEC)

## Shower head FlowReduce

28 508 710

Parts for other  
finishes can be found  
here: [Brushed](#)  
[Platinum](#)



### Spare parts list

No.	Item Number	Name	Quantity used	Delivery time
1	09 27 71 027-00	rosette	1	10
2	09 31 11 048 90	pin	1	2
3	09 14 10 098 90	seal	1	2
4	09 11 03 011-00	connection	1	10
5	04 12 11 110 30-00	shower	1	10