

Wall elbow

28 450 845

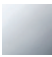


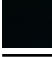



- 3/8" shower outlet
- rosette 60 x 78 mm
- 1/2" connection

Codes & standards

Intrinsic protection against back flow.

Intrinsic protection against back flow.

	Chrome	28 450 845-00
	Brushed Platinum	28 450 845-06
	Dark Chrome	28 450 845-19
	Matte Black	28 450 845-33
	Brushed Chrome	28 450 845-93

Required miscellaneous

Concealed adapter

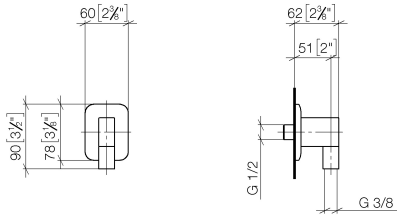
35 080 970-90
0010



Wall elbow

28 450 845

mm [inches]



Flow rate chart

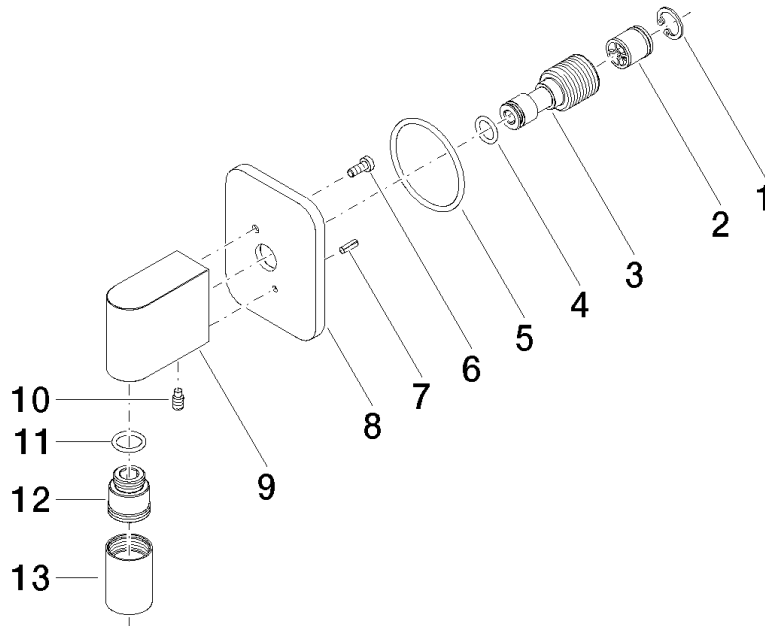


Codes & Standards

ASME
A112.18.1/CSA
B125.1

Wall elbow

28 450 845



Spare parts list

No.	Item Number	Name	Quantity used	Delivery time
1	09 16 01 014 90	ring	1	2
2	09 23 01 141 90	back-flow preventer	1	2
3	09 24 03 116 20 90	nipple	1	2
4	09 14 10 008 90	seal	1	2
5	09 14 10 142 90	seal	1	2
6	09 30 30 054 90	screw	1	2
7	09 31 11 026 90	pin	1	2
8	09 27 84 021-00	rosette	1	10
9	09 11 03 046-00	connection	1	10
10	09 31 11 005 90	pin	1	2
11	09 14 10 077 90	seal	1	2
12	09 24 03 107 20 90	nipple	1	2
13	09 21 02 069-00	cover	1	10