

## Hand shower set for bath rim or tile edge installation

27 702 979



- normal flow
- with anti-scale system
- rosette Ø 50 mm
- hole diameter 32 mm
- metal shower hose 1750mm with integrated anti-twist protection
- max. flow 6.8 l/min

**Codes & standards**

Two-piece design allows hose to later be changed without dismantling the fitting.

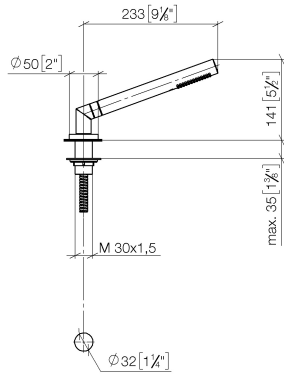
Intrinsic protection against back flow.

	Chrome	27 702 979-00
	Brushed Platinum	27 702 979-06
	Platinum	27 702 979-08
	Durabronze (23kt Gold)	27 702 979-09
	Matte White	27 702 979-10
	Dark Chrome	27 702 979-19
	Brushed Durabronze (23kt Gold)	27 702 979-28
	Matte Black	27 702 979-33
	Brushed Champagne (22kt Gold)	27 702 979-46
	Champagne (22kt Gold)	27 702 979-47
	Brushed Chrome	27 702 979-93
	Brushed Dark Platinum	27 702 979-99

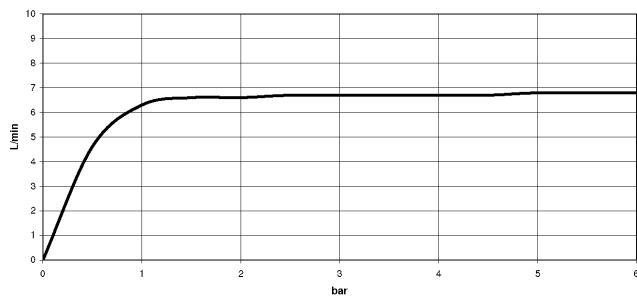
## Hand shower set for bath rim or tile edge installation

27 702 979

mm [inches]



### Flow rate chart



### Codes & Standards

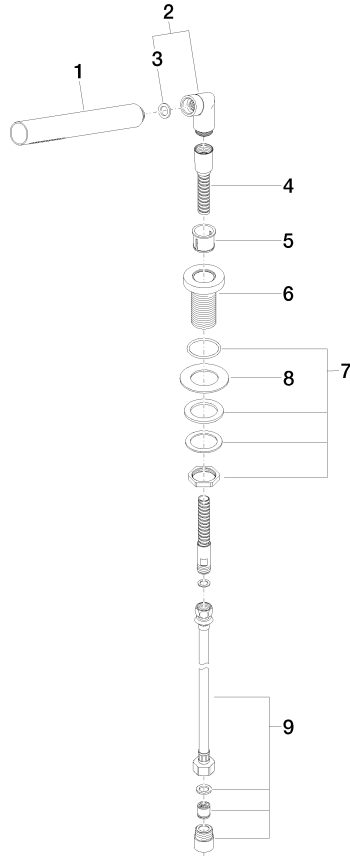
ASME  
A112.18.1/CSA  
B125.1

California Energy  
Commission  
(CEC)

## Hand shower set for bath rim or tile edge installation

27 702 979

Parts for other finishes can be found here: [Brushed](#)  
[Platinum](#)



### Spare parts list

No.	Item Number	Name	Quantity used	Delivery time
1	28 019 979-00	Hand shower	1	2
2	04 24 04 287 00-00	nipple	1	10
3	09 14 20 002 90	seal	1	60
4	28 322 970-00	Metal shower hose 1/2" x 3/8" x 1750 mm	1	2
5	09 18 40 085 90	sleeve	1	2
6	09 30 01 085-00	rosette	1	10
7	04 30 11 038 66 90	fixing set	1	2
8	09 30 11 060 90	disc	1	2
9	12 505 970 90	High pressure hose 1/2" x 3/8" x 500 mm	1	2