

Three-hole basin mixer with pop-up waste

20 713 661


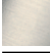


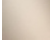




- 168 mm projection
- US pop-up waste (only used in the USA)
- pivotable spout 360°
- circular, air-enriched flow
- height of mixer 280 mm
- height up to aerator 191 mm
- hole diameter valve 32 mm
- hole diameter spout 35 mm
- rosette Ø 60 mm
- 2x screw-in M 8 x 1 pressure hose, leak-tested
- max. flow 4.5 l/min
- lead-free

Codes & standards

- NSF/ANSI 372
- This product can help a building to meet requirements of Green Building Rating Systems, e.g. LEED®, BREEAM®, DGNB, WELL

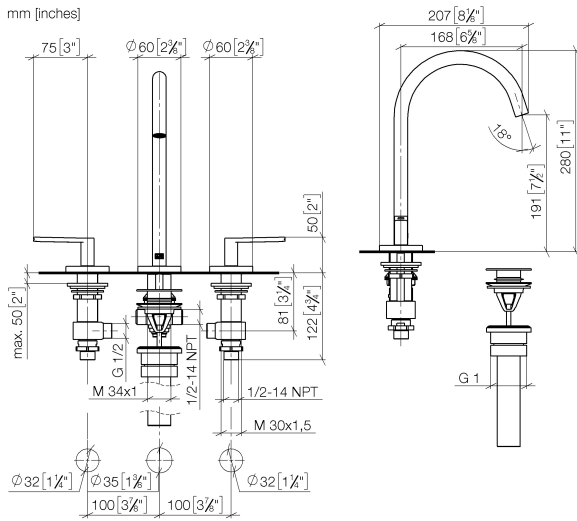
Only suitable for basins with an overflow.

	Chrome	20 713 661-00 0010
	Brushed Platinum	20 713 661-06 0010
	Dark Chrome	20 713 661-19 0010
	Matte Black	20 713 661-33 0010
	Brushed Champagne (22kt Gold)	20 713 661-46 0010
	Champagne (22kt Gold)	20 713 661-47 0010
	Brushed Chrome	20 713 661-93 0010

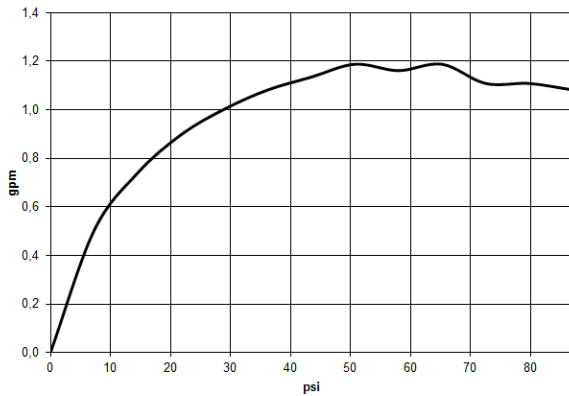


Three-hole basin mixer with pop-up waste

20 713 661



Flow rate chart



Codes & Standards

ADA

ASME
A112.18.1/CSA
B125.1

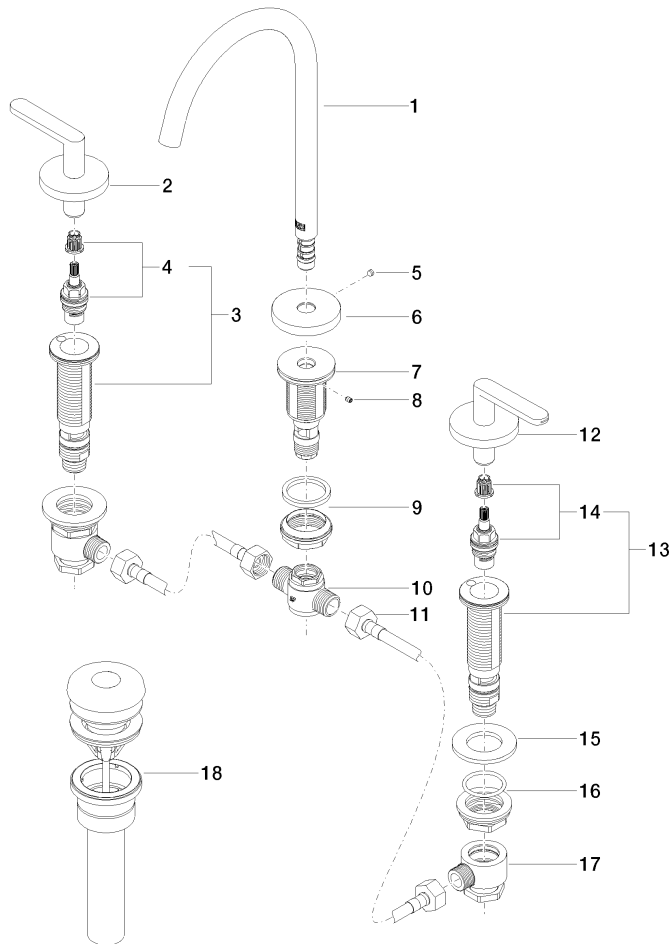
California Energy
Commission
(CEC)

NSF/ANSI 372

NSF/ANSI/CAN
61

Three-hole basin mixer with pop-up waste

20 713 661



Spare parts list

No.	Item Number	Name	Quantity used	Delivery time
1	90 28 22 325 01-00	spout	1	10
2	90 20 66 016 00-00	handle (hot)	1	10
3	04 17 11 058 32 90	side panel	1	2
4	90 90 03 132 00 90	top	1	2
5	09 31 11 112 90	pin	1	60
6	09 27 66 002-00	rosette	1	60
7	09 30 01 287 90	connection	1	60
8	09 31 11 044 90	pin	1	2
9	04 23 10 044 07 90	fixing set	1	2
10	04 17 11 020 10 90	distributor	1	2
11	04 30 04 096 00 90	hose	2	2
12	90 20 66 015 00-00	handle (cold)	1	10
13	04 17 11 058 33 90	side panel	1	2
14	90 90 03 133 00 90	top	1	2
15	09 30 11 099 90	disc	2	2
16	04 23 10 032 78 90	fixing set	2	2
17	04 17 11 023 10 90	distributor	2	2
18	10 125 970-00 0010	Basin Waste 1 1/4"	1	2