

**Deck valve clockwise closing cold or hot**

20 000 892

- hole diameter 32 mm
- rosette Ø 55 mm

**Codes & standards**

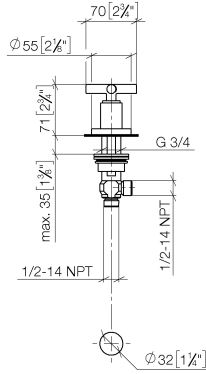


	Chrome	20 000 892-00
	Brushed Platinum	20 000 892-06
	Platinum	20 000 892-08
	Matte White	20 000 892-10
	Dark Chrome	20 000 892-19
	Brushed Durabronze (23kt Gold)	20 000 892-28
	Matte Black	20 000 892-33
	Brushed Champagne (22kt Gold)	20 000 892-46
	Champagne (22kt Gold)	20 000 892-47
	Brushed Chrome	20 000 892-93
	Brushed Dark Platinum	20 000 892-99

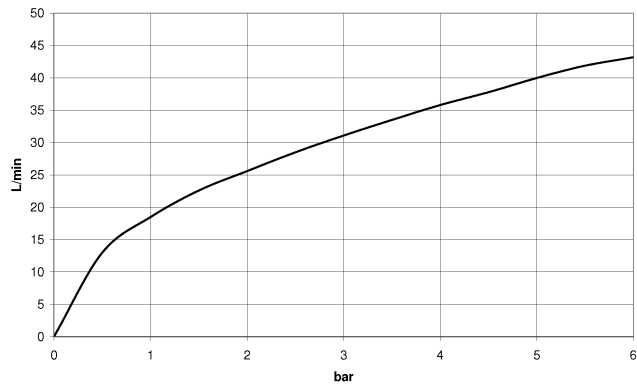
**Deck valve clockwise closing cold or hot**

20 000 892

mm [inches]



**Flow rate chart**



**Codes & Standards**

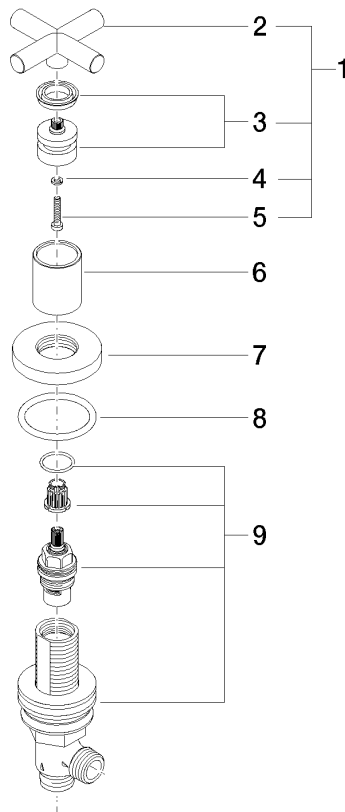
ADA

ASME  
A112.18.1/CSA  
B125.1

## Deck valve clockwise closing cold or hot

20 000 892

Parts for other finishes can be found here: **Brushed**  
**Platinum**



### Spare parts list

No.	Item Number	Name	Quantity used	Delivery time
1	04 20 89 010 00-00	handle	1	60
2	09 20 89 010-00	handle	1	10
3	90 12 12 007 00-00	base	1	10
4	09 30 11 029 90	disc	1	2
5	09 30 30 075 90	screw	1	2
6	09 21 02 140-00	sleeve	1	10
7	09 27 89 105-00	rosette	1	10
8	09 14 10 043 90	seal	1	2
9	90 17 11 040 31 90	side panel	1	2