

## Bath spout for wall mounting

13 801 892



- 200 mm projection
- circular normal flow
- rosette Ø 55 mm
- hole diameter 37 mm
- 1/2" connection
- max. flow 29 l/min at 3 bar flow pressure
- WRAS: 1811020

### Codes & standards

	Chrome	13 801 892-00
	Brushed Platinum	13 801 892-06
	Platinum	13 801 892-08
	Matte White	13 801 892-10
	Dark Chrome	13 801 892-19
	Brushed Durabrass (23kt Gold)	13 801 892-28
	Matte Black	13 801 892-33
	Brushed Champagne (22kt Gold)	13 801 892-46
	Champagne (22kt Gold)	13 801 892-47
	Brushed Chrome	13 801 892-93
	Brushed Dark Platinum	13 801 892-99

### Required miscellaneous

**Concealed adapter**

35 080 970-90  
0010

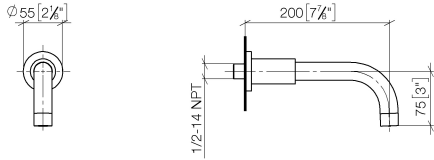


## Bath spout for wall mounting

---

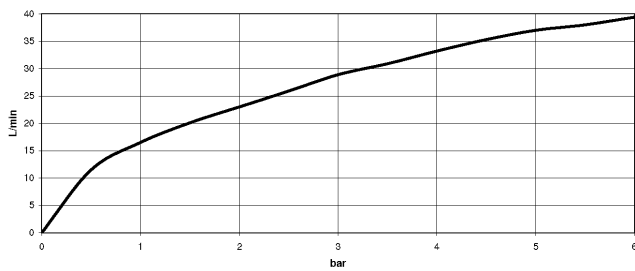
13 801 892

mm [inches]



### Flow rate chart

---



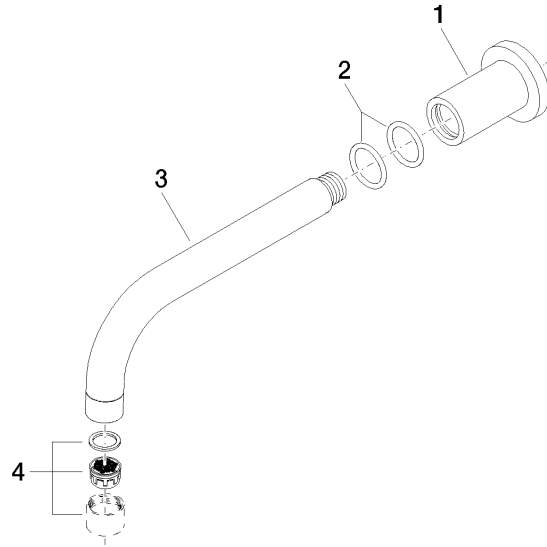
### Codes & Standards

---

ASME  
A112.18.1/CSA  
B125.1

**Bath spout for wall mounting**

13 801 892



**Spare parts list**

No.	Item Number	Name	Quantity used	Delivery time
1	09 27 89 009-00	rosette	1	10
2	09 14 10 025 90	seal	2	2
3	04 28 22 198 20-00	spout	1	10
4	90 23 01 024 00-00	aerator	1	10