




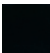

Bath spout for wall mounting

13 801 845



- 210 mm projection
- circular normal flow
- hole diameter 37 mm
- 1/2" connection
- plug-link mounting
- max. flow 21.5 l/min at 3 bar flow pressure
- WRAS: 2207003

Codes & standards

	Chrome	13 801 845-00
	Brushed Platinum	13 801 845-06
	Dark Chrome	13 801 845-19
	Matte Black	13 801 845-33
	Brushed Chrome	13 801 845-93

Required miscellaneous

Concealed adapter

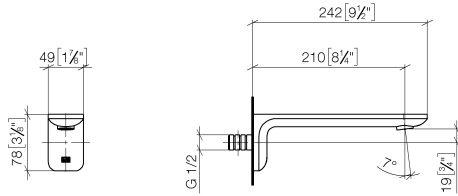
35 080 970-90
0010



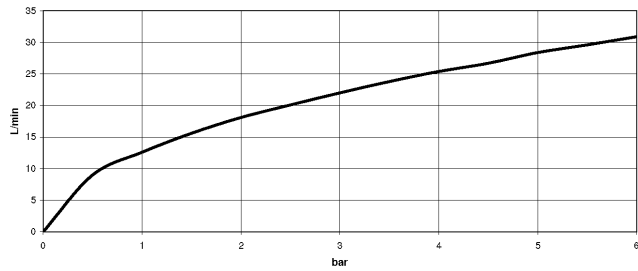
Bath spout for wall mounting

13 801 845

mm [inches]



Flow rate chart

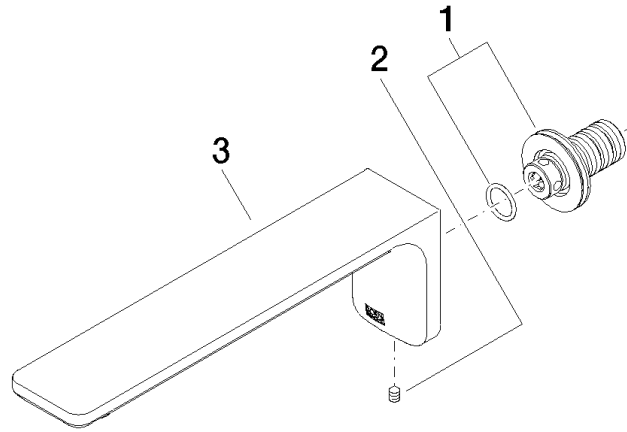


Codes & Standards

ASME
A112.18.1/CSA
B125.1

Bath spout for wall mounting

13 801 845



Spare parts list

No.	Item Number	Name	Quantity used	Delivery time
1	90 24 03 108 00 90	nipple set	1	2
2	04 31 11 004 00 90	pin	1	2
3	90 11 84 014 02-00	spout	1	10